

RASAL2 Antibody (Center)

Affinity Purified Rabbit Polyclonal Antibody (Pab)

Catalog # AP12987c

Product Information

Application	WB, E
Primary Accession	Q9UJF2
Other Accession	NP_004832.1
Reactivity	Human
Host	Rabbit
Clonality	Polyclonal
Isotype	Rabbit IgG
Clone Names	RB32521
Calculated MW	128558
Antigen Region	675-703

Additional Information

Gene ID	9462
Other Names	Ras GTPase-activating protein nGAP, RAS protein activator-like 2, RASAL2, NGAP
Target/Specificity	This RASAL2 antibody is generated from rabbits immunized with a KLH conjugated synthetic peptide between 675-703 amino acids from the Central region of human RASAL2.
Dilution	WB~~1:1000 E~~Use at an assay dependent concentration.
Format	Purified polyclonal antibody supplied in PBS with 0.09% (W/V) sodium azide. This antibody is purified through a protein A column, followed by peptide affinity purification.
Storage	Maintain refrigerated at 2-8°C for up to 2 weeks. For long term storage store at -20°C in small aliquots to prevent freeze-thaw cycles.
Precautions	RASAL2 Antibody (Center) is for research use only and not for use in diagnostic or therapeutic procedures.

Protein Information

Name	RASAL2
Synonyms	NGAP
Function	Inhibitory regulator of the Ras-cyclic AMP pathway.

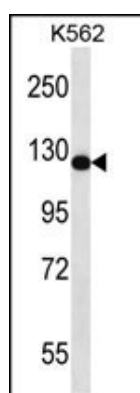
Background

This gene encodes a protein that contains the GAP-related domain (GRD), a characteristic domain of GTPase-activating proteins (GAPs). GAPs function as activators of Ras superfamily of small GTPases. The protein encoded by this gene is able to complement the defective RasGAP function in a yeast system. Two alternatively spliced transcript variants of this gene encoding distinct isoforms have been reported.

References

Fontaine-Bisson, B., et al. *Diabetologia* 53(10):2155-2162(2010)
Shibui, T., et al. *Biotechnol. Lett.* 30(12):2037-2043(2008)
Olsen, J.V., et al. *Cell* 127(3):635-648(2006)
Noto, S., et al. *FEBS Lett.* 441(1):127-131(1998)

Images



RASAL2 Antibody (Center) (Cat. #AP12987c) western blot analysis in K562 cell line lysates (35ug/lane). This demonstrates the RASAL2 antibody detected the RASAL2 protein (arrow).

Please note: All products are 'FOR RESEARCH USE ONLY. NOT FOR USE IN DIAGNOSTIC OR THERAPEUTIC PROCEDURES'.