

CATSPER1 Antibody (N-term)

Affinity Purified Rabbit Polyclonal Antibody (Pab)

Catalog # AP12995a

Product Information

| | |
|--------------------------|-----------------------------|
| Application | WB, E |
| Primary Accession | Q8NEC5 |
| Other Accession | NP_444282.3 |
| Reactivity | Human |
| Host | Rabbit |
| Clonality | Polyclonal |
| Isotype | Rabbit IgG |
| Clone Names | RB32588 |
| Calculated MW | 90091 |
| Antigen Region | 36-65 |

Additional Information

| | |
|---------------------------|------------------------------------------------------------------------------------------------------------------------------------------------------------------------------|
| Gene ID | 117144 |
| Other Names | Cation channel sperm-associated protein 1, CatSper1, hCatSper, CATSPER1 |
| Target/Specificity | This CATSPER1 antibody is generated from rabbits immunized with a KLH conjugated synthetic peptide between 36-65 amino acids from the N-terminal region of human CATSPER1. |
| Dilution | WB~~1:1000 E~~Use at an assay dependent concentration. |
| Format | Purified polyclonal antibody supplied in PBS with 0.09% (W/V) sodium azide. This antibody is purified through a protein A column, followed by peptide affinity purification. |
| Storage | Maintain refrigerated at 2-8°C for up to 2 weeks. For long term storage store at -20°C in small aliquots to prevent freeze-thaw cycles. |
| Precautions | CATSPER1 Antibody (N-term) is for research use only and not for use in diagnostic or therapeutic procedures. |

Protein Information

| | |
|-----------------|-------------------------------------------------------------------------------------------------------------------------------------------------------------------------------------------------------------------------------------------------------------------------------------------------|
| Name | CATSPER1 |
| Function | Pore-forming subunit of the CatSper complex, a sperm-specific voltage-gated calcium channel that plays a central role in calcium- dependent physiological responses essential for successful fertilization, such as sperm hyperactivation, acrosome reaction and chemotaxis towards the oocyte. |

| | |
|--------------------------|------------------------------------------------------------------------------------------------------------------------------------------------------------------------------|
| Cellular Location | Cell projection, cilium, flagellum membrane; Multi-pass membrane protein {ECO:0000250 UniProtKB:Q91ZR5}. Note=Specifically located in the principal piece of the sperm tail. |
| Tissue Location | Testis-specific. |

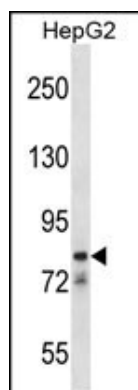
Background

Calcium ions play a primary role in the regulation of sperm motility. This gene belongs to a family of putative cation channels that are specific to spermatozoa and localize to the flagellum. The protein family features a single repeat with six membrane-spanning segments and a predicted calcium-selective pore region.

References

Li, H., et al. Fertil. Steril. 92(3):1141-1146(2009)
Avenarius, M.R., et al. Am. J. Hum. Genet. 84(4):505-510(2009)
Zhang, D., et al. J. Biol. Chem. 281(31):22332-22341(2006)
Li, H.G., et al. Asian J. Androl. 8(3):301-306(2006)
Clapham, D.E., et al. Pharmacol. Rev. 57(4):451-454(2005)

Images



CATSPER1 Antibody (N-term) (Cat. #AP12995a) western blot analysis in HepG2 cell line lysates (35ug/lane). This demonstrates the CATSPER1 antibody detected the CATSPER1 protein (arrow).

Please note: All products are 'FOR RESEARCH USE ONLY. NOT FOR USE IN DIAGNOSTIC OR THERAPEUTIC PROCEDURES'.