

SP6 Antibody (Center)

Affinity Purified Rabbit Polyclonal Antibody (Pab)

Catalog # AP13016c

Product Information

Application	WB, FC, E
Primary Accession	Q3SY56
Other Accession	Q9ESX2 , NP_954871.1
Reactivity	Human
Predicted	Mouse
Host	Rabbit
Clonality	Polyclonal
Isotype	Rabbit IgG
Clone Names	RB32770
Calculated MW	39840
Antigen Region	196-225

Additional Information

Gene ID	80320
Other Names	Transcription factor Sp6, Krueppel-like factor 14, SP6, KLF14
Target/Specificity	This SP6 antibody is generated from rabbits immunized with a KLH conjugated synthetic peptide between 196-225 amino acids from the Central region of human SP6.
Dilution	WB~~1:1000 FC~~1:10~50 E~~Use at an assay dependent concentration.
Format	Purified polyclonal antibody supplied in PBS with 0.09% (W/V) sodium azide. This antibody is purified through a protein A column, followed by peptide affinity purification.
Storage	Maintain refrigerated at 2-8°C for up to 2 weeks. For long term storage store at -20°C in small aliquots to prevent freeze-thaw cycles.
Precautions	SP6 Antibody (Center) is for research use only and not for use in diagnostic or therapeutic procedures.

Protein Information

Name	SP6
Synonyms	KLF14
Function	Promotes cell proliferation (By similarity). Plays a role in tooth germ growth

(By similarity). Plays a role in the control of enamel mineralization. Binds the AMBN promoter (PubMed:[32167558](#)).

Cellular Location	Nucleus.
Tissue Location	Ubiquitous.

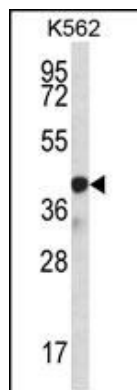
Background

SP6 belongs to a family of transcription factors that contain 3 classical zinc finger DNA-binding domains consisting of a zinc atom tetrahedrally coordinated by 2 cysteines and 2 histidines (C2H2 motif). These transcription factors bind to GC-rich sequences and related GT and CACCC boxes (Schoy et al., 2000 [PubMed 11087666]).

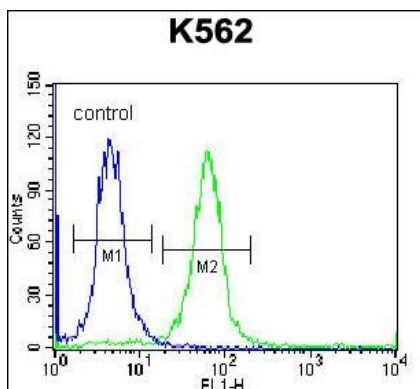
References

Nakamura, T., et al. J. Biol. Chem. 279(1):626-634(2004)
Schoy, S., et al. Genomics 70(1):93-101(2000)

Images



SP6 Antibody (Center) (Cat. #AP13016c) western blot analysis in K562 cell line lysates (35ug/lane). This demonstrates the SP6 antibody detected the SP6 protein (arrow).



SP6 Antibody (Center) (Cat. #AP13016c) flow cytometric analysis of K562 cells (right histogram) compared to a negative control cell (left histogram). FITC-conjugated donkey-anti-rabbit secondary antibodies were used for the analysis.

Please note: All products are 'FOR RESEARCH USE ONLY. NOT FOR USE IN DIAGNOSTIC OR THERAPEUTIC PROCEDURES'.