

# STMN3 Antibody (C-term)

Affinity Purified Rabbit Polyclonal Antibody (Pab)

Catalog # AP13019b

## Product Information

---

|                   |  |
|-------------------|--|
| Application       | WB, E  |
| Primary Accession | <a href="#">Q9NZ72</a>   |
| Other Accession   | <a href="#">Q9JHU6</a> , <a href="#">O70166</a> , <a href="#">Q4R4N5</a> , <a href="#">O93388</a> , <a href="#">A4IFK9</a> , <a href="#">NP_056978.2</a> |
| Reactivity        | Human  |
| Predicted         | Bovine, Chicken, Monkey, Mouse, Rat  |
| Host              | Rabbit   |
| Clonality         | Polyclonal   |
| Isotype           | Rabbit IgG   |
| Clone Names       | RB32777  |
| Calculated MW     | 21017  |
| Antigen Region    | 148-177  |

## Additional Information

---

|                    |  |
|--------------------|--|
| Gene ID            | 50861  |
| Other Names        | Stathmin-3, SCG10-like protein, STMN3, SCLIP   |
| Target/Specificity | This STMN3 antibody is generated from rabbits immunized with a KLH conjugated synthetic peptide between 148-177 amino acids from the C-terminal region of human STMN3.       |
| Dilution           | WB~~1:1000 E~~Use at an assay dependent concentration.   |
| Format             | Purified polyclonal antibody supplied in PBS with 0.09% (W/V) sodium azide. This antibody is purified through a protein A column, followed by peptide affinity purification. |
| Storage            | Maintain refrigerated at 2-8°C for up to 2 weeks. For long term storage store at -20°C in small aliquots to prevent freeze-thaw cycles.                                      |
| Precautions        | STMN3 Antibody (C-term) is for research use only and not for use in diagnostic or therapeutic procedures.  |

## Protein Information

---

|          |   |
|----------|---|
| Name     | STMN3   |
| Synonyms | SCLIP   |
| Function | Exhibits microtubule-destabilizing activity, which is antagonized by STAT3. |

**Cellular Location** Golgi apparatus. Cell projection, growth cone. Cell projection, axon. Cytoplasm, cytosol {ECO:0000250|UniProtKB:Q9JHU6}

**Tissue Location** Neuron specific.

## Background

---

The protein encoded by this gene belongs to the stathmin/oncoprotein 18 family of microtubule-destabilizing phosphoproteins. It is similar to the SCG10 protein and is involved in signal transduction and regulation of microtubule dynamics.

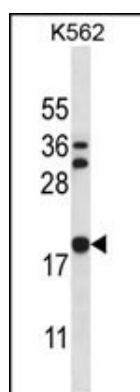
## References

---

Ng, D.C., et al. Biochem. J. 425(1):95-105(2010)  
Mahapatra, N.R., et al. Biochemistry 47(27):7167-7178(2008)  
Bieche, I., et al. Genomics 81(4):400-410(2003)  
Deloukas, P., et al. Nature 414(6866):865-871(2001)  
Charbaut, E., et al. J. Biol. Chem. 276(19):16146-16154(2001)

## Images

---



STMN3 Antibody (C-term) (Cat. #AP13019b) western blot analysis in K562 cell line lysates (35ug/lane). This demonstrates the STMN3 antibody detected the STMN3 protein (arrow).

Please note: All products are 'FOR RESEARCH USE ONLY. NOT FOR USE IN DIAGNOSTIC OR THERAPEUTIC PROCEDURES'.