

MUC15 Antibody (C-term)

Affinity Purified Rabbit Polyclonal Antibody (Pab)

Catalog # AP13032b

Product Information

| | |
|--------------------------|-----------------------------|
| Application | WB, IHC-P, E |
| Primary Accession | Q8N387 |
| Other Accession | NP_663625.2 |
| Reactivity | Human |
| Host | Rabbit |
| Clonality | Polyclonal |
| Isotype | Rabbit IgG |
| Clone Names | RB32832 |
| Calculated MW | 36294 |
| Antigen Region | 209-237 |

Additional Information

| | |
|---------------------------|--|
| Gene ID | 143662 |
| Other Names | Mucin-15, MUC-15, MUC15 |
| Target/Specificity | This MUC15 antibody is generated from rabbits immunized with a KLH conjugated synthetic peptide between 209-237 amino acids from the C-terminal region of human MUC15. |
| Dilution | WB~~1:1000 IHC-P~~1:100~500 E~~Use at an assay dependent concentration. |
| Format | Purified polyclonal antibody supplied in PBS with 0.09% (W/V) sodium azide. This antibody is purified through a protein A column, followed by peptide affinity purification. |
| Storage | Maintain refrigerated at 2-8°C for up to 2 weeks. For long term storage store at -20°C in small aliquots to prevent freeze-thaw cycles. |
| Precautions | MUC15 Antibody (C-term) is for research use only and not for use in diagnostic or therapeutic procedures. |

Protein Information

| | |
|--------------------------|---|
| Name | MUC15 |
| Function | May play a role in the cell adhesion to the extracellular matrix. |
| Cellular Location | [Isoform 1]: Cell membrane; Single- pass type I membrane protein |

Tissue Location

Expressed in spleen, thymus, prostate, testis, ovary, small intestine, colon, peripheral blood leukocyte, bone marrow, lymph node and lung.

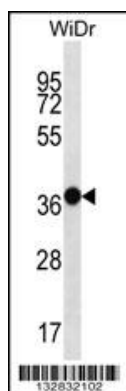
Background

MUC15 may play a role in the cell adhesion to the extracellular matrix.

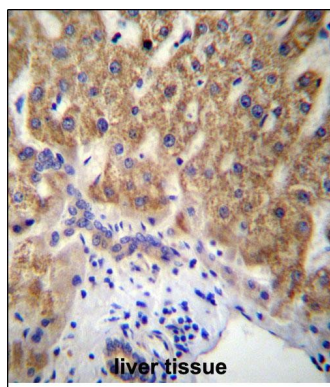
References

Cotsapas, C., et al. Hum. Mol. Genet. 18(18):3502-3507(2009)
Huang, J., et al. Carcinogenesis 30(8):1452-1458(2009)
Samuels, T.L., et al. Ann. Otol. Rhinol. Laryngol. 117(9):688-695(2008)
Shyu, M.K., et al. Hum. Reprod. 22(10):2723-2732(2007)
Lamesch, P., et al. Genomics 89(3):307-315(2007)

Images



MUC15 Antibody (C-term) (Cat. #AP13032b) western blot analysis in WiDr cell line lysates (35ug/lane). This demonstrates the MUC15 antibody detected the MUC15 protein (arrow).



MUC15 Antibody (C-term) (Cat. #AP13032b) immunohistochemistry analysis in formalin fixed and paraffin embedded human liver tissue followed by peroxidase conjugation of the secondary antibody and DAB staining. This data demonstrates the use of MUC15 Antibody (C-term) for immunohistochemistry. Clinical relevance has not been evaluated.

Please note: All products are 'FOR RESEARCH USE ONLY. NOT FOR USE IN DIAGNOSTIC OR THERAPEUTIC PROCEDURES'.