

# TOR1B Antibody (C-term)

Affinity Purified Rabbit Polyclonal Antibody (Pab)

Catalog # AP13034b

## Product Information

---

<b>Application</b>	WB, IHC-P, E
<b>Primary Accession</b>	<a href="#">O14657</a>
<b>Other Accession</b>	<a href="#">NP_055321.1</a>
<b>Reactivity</b>	Human
<b>Host</b>	Rabbit
<b>Clonality</b>	Polyclonal
<b>Isotype</b>	Rabbit IgG
<b>Clone Names</b>	RB32839
<b>Calculated MW</b>	37979
<b>Antigen Region</b>	215-243

## Additional Information

---

<b>Gene ID</b>	27348
<b>Other Names</b>	Torsin-1B, Torsin ATPase-1B, 364-, Torsin family 1 member B, TOR1B, DQ1
<b>Target/Specificity</b>	This TOR1B antibody is generated from rabbits immunized with a KLH conjugated synthetic peptide between 215-243 amino acids from the C-terminal region of human TOR1B.
<b>Dilution</b>	WB~~1:1000 IHC-P~~1:100~500 E~~Use at an assay dependent concentration.
<b>Format</b>	Purified polyclonal antibody supplied in PBS with 0.09% (W/V) sodium azide. This antibody is purified through a protein A column, followed by peptide affinity purification.
<b>Storage</b>	Maintain refrigerated at 2-8°C for up to 2 weeks. For long term storage store at -20°C in small aliquots to prevent freeze-thaw cycles.
<b>Precautions</b>	TOR1B Antibody (C-term) is for research use only and not for use in diagnostic or therapeutic procedures.

## Protein Information

---

<b>Name</b>	TOR1B
<b>Synonyms</b>	DQ1
<b>Function</b>	May serve as a molecular chaperone assisting in the proper folding of secreted and/or membrane proteins. Plays a role in non- neural cells nuclear

envelope and endoplasmic reticulum integrity. May have a redundant function with TOR1A in non-neural tissues.

**Cellular Location**

Endoplasmic reticulum lumen. Nucleus membrane

**Tissue Location**

Widely expressed with low levels in brain.

## Background

---

TOR1B may serve as a molecular chaperone assisting in the proper folding of secreted and/or membrane proteins (By similarity).

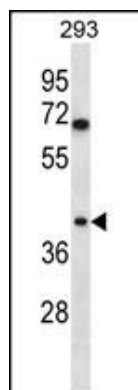
## References

---

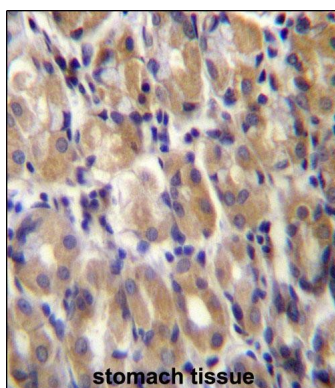
Sharma, N., et al. Mov. Disord. (2010) In press :  
Kamm, C., et al. Neurology 67(10):1857-1859(2006)  
Bahn, E., et al. Brain Res. 1116(1):112-119(2006)  
Hewett, J.W., et al. J. Neurochem. 89(5):1186-1194(2004)  
Humphray, S.J., et al. Nature 429(6990):369-374(2004)

## Images

---



TOR1B Antibody (C-term) (Cat. #AP13034b) western blot analysis in 293 cell line lysates (35ug/lane). This demonstrates the TOR1B antibody detected the TOR1B protein (arrow).



TOR1B Antibody (C-term) (Cat. #AP13034b) immunohistochemistry analysis in formalin fixed and paraffin embedded human stomach tissue followed by peroxidase conjugation of the secondary antibody and DAB staining. This data demonstrates the use of TOR1B Antibody (C-term) for immunohistochemistry. Clinical relevance has not been evaluated.

Please note: All products are 'FOR RESEARCH USE ONLY. NOT FOR USE IN DIAGNOSTIC OR THERAPEUTIC PROCEDURES'.