

MRPL9 Antibody (N-term)

Affinity Purified Rabbit Polyclonal Antibody (Pab)

Catalog # AP13041a

Product Information

Application	WB, IHC-P, E
Primary Accession	Q9BYD2
Other Accession	Q2TBK2 , NP_113608.1
Reactivity	Human
Predicted	Bovine
Host	Rabbit
Clonality	Polyclonal
Isotype	Rabbit IgG
Clone Names	RB32895
Calculated MW	30243
Antigen Region	66-95

Additional Information

Gene ID	65005
Other Names	39S ribosomal protein L9, mitochondrial, L9mt, MRP-L9, MRPL9
Target/Specificity	This MRPL9 antibody is generated from rabbits immunized with a KLH conjugated synthetic peptide between 66-95 amino acids from the N-terminal region of human MRPL9.
Dilution	WB~~1:1000 IHC-P~~1:100~500 E~~Use at an assay dependent concentration.
Format	Purified polyclonal antibody supplied in PBS with 0.09% (W/V) sodium azide. This antibody is purified through a protein A column, followed by peptide affinity purification.
Storage	Maintain refrigerated at 2-8°C for up to 2 weeks. For long term storage store at -20°C in small aliquots to prevent freeze-thaw cycles.
Precautions	MRPL9 Antibody (N-term) is for research use only and not for use in diagnostic or therapeutic procedures.

Protein Information

Name	MRPL9
Cellular Location	Mitochondrion

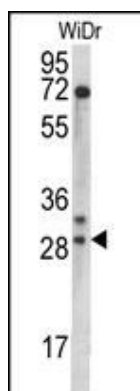
Background

Mammalian mitochondrial ribosomal proteins are encoded by nuclear genes and help in protein synthesis within the mitochondrion. Mitochondrial ribosomes (mitoribosomes) consist of a small 28S subunit and a large 39S subunit. They have an estimated 75% protein to rRNA composition compared to prokaryotic ribosomes, where this ratio is reversed. Another difference between mammalian mitoribosomes and prokaryotic ribosomes is that the latter contain a 5S rRNA. Among different species, the proteins comprising the mitoribosome differ greatly in sequence, and sometimes in biochemical properties, which prevents easy recognition by sequence homology. This gene encodes a 39S subunit protein. A pseudogene corresponding to this gene is found at 8q21.11. [provided by RefSeq].

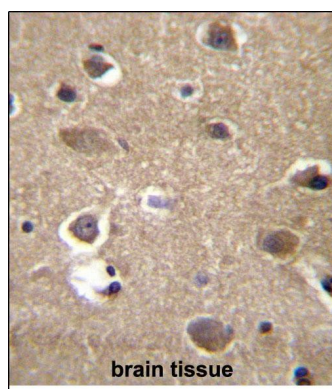
References

Naukkarinen, J., et al. PLoS Genet. 6 (6), E1000976 (2010) :
Zhang, Z., et al. Genomics 81(5):468-480(2003)
Koc, E.C., et al. J. Biol. Chem. 276(47):43958-43969(2001)
Kenmochi, N., et al. Genomics 77 (1-2), 65-70 (2001) :
Suzuki, T., et al. J. Biol. Chem. 276(24):21724-21736(2001)

Images



MRPL9 Antibody (N-term) (Cat. #AP13041a) western blot analysis in WiDr cell line lysates (35ug/lane). This demonstrates the MRPL9 antibody detected the MRPL9 protein (arrow).



MRPL9 Antibody (N-term) (Cat. #AP13041a) immunohistochemistry analysis in formalin fixed and paraffin embedded human brain tissue followed by peroxidase conjugation of the secondary antibody and DAB staining. This data demonstrates the use of MRPL9 Antibody (N-term) for immunohistochemistry. Clinical relevance has not been evaluated.

Please note: All products are 'FOR RESEARCH USE ONLY. NOT FOR USE IN DIAGNOSTIC OR THERAPEUTIC PROCEDURES'.