

## CCDC90B Antibody (Center)

Affinity Purified Rabbit Polyclonal Antibody (Pab)

Catalog # AP13045c

### Product Information

---

<b>Application</b>	IHC-P, WB, E
<b>Primary Accession</b>	<a href="#">Q9GZT6</a>
<b>Other Accession</b>	<a href="#">Q4V897</a> , <a href="#">Q8C3X2</a> , <a href="#">NP_068597.2</a>
<b>Reactivity</b>	Human
<b>Predicted</b>	Mouse, Rat
<b>Host</b>	Rabbit
<b>Clonality</b>	Polyclonal
<b>Isotype</b>	Rabbit IgG
<b>Clone Names</b>	RB32911
<b>Calculated MW</b>	29506
<b>Antigen Region</b>	123-152

### Additional Information

---

<b>Gene ID</b>	60492
<b>Other Names</b>	Coiled-coil domain-containing protein 90B, mitochondrial, CCDC90B
<b>Target/Specificity</b>	This CCDC90B antibody is generated from rabbits immunized with a KLH conjugated synthetic peptide between 123-152 amino acids from the Central region of human CCDC90B.
<b>Dilution</b>	IHC-P~~1:100~500 WB~~1:1000 E~~Use at an assay dependent concentration.
<b>Format</b>	Purified polyclonal antibody supplied in PBS with 0.09% (W/V) sodium azide. This antibody is purified through a protein A column, followed by peptide affinity purification.
<b>Storage</b>	Maintain refrigerated at 2-8°C for up to 2 weeks. For long term storage store at -20°C in small aliquots to prevent freeze-thaw cycles.
<b>Precautions</b>	CCDC90B Antibody (Center) is for research use only and not for use in diagnostic or therapeutic procedures.

### Protein Information

---

<b>Name</b>	CCDC90B
<b>Cellular Location</b>	Mitochondrion membrane; Single-pass membrane protein

## Background

---

Coiled-coil domain containing 90B (CCDC90B) protein has seven predicted alpha helices, a characteristic of coiled-coil proteins. CCDC90B is characterized by the presence of a domain of unknown function, DUF1640. This domain is a characteristic of the entire protein with the exception of the first twenty-three amino acid residues, which are a mitochondrial targeting site and cleaved. This entry describes 2 isoforms produced by alternative splicing.

## References

---

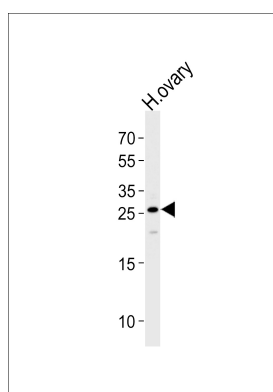
Matsuoka, S., et al. Science 316(5828):1160-1166(2007)

Stelzl, U., et al. Cell 122(6):957-968(2005)

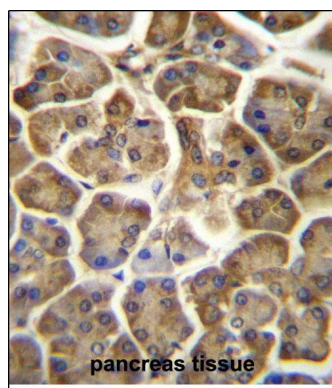
Simpson, J.C., et al. EMBO Rep. 1(3):287-292(2000)

## Images

---



Western blot analysis of lysate from human ovary tissue lysate, using CCDC90B Antibody (Center)(Cat. #AP13045c). AP13045c was diluted at 1:1000 at each lane. A goat anti-rabbit IgG H&L(HRP) at 1:5000 dilution was used as the secondary antibody. Lysate at 35ug per lane.



CCDC90B Antibody (Center) (Cat. #AP13045c) immunohistochemistry analysis in formalin fixed and paraffin embedded human pancreas tissue followed by peroxidase conjugation of the secondary antibody and DAB staining. This data demonstrates the use of CCDC90B Antibody (Center) for immunohistochemistry. Clinical relevance has not been evaluated.

Please note: All products are 'FOR RESEARCH USE ONLY. NOT FOR USE IN DIAGNOSTIC OR THERAPEUTIC PROCEDURES'.