

# Bcl-G BH3 Domain Antibody

Purified Rabbit Polyclonal Antibody (Pab)

Catalog # AP1304a

## Product Information

---

<b>Application</b>	WB, IHC-P, E
<b>Primary Accession</b>	<a href="#">Q9BZR8</a>
<b>Reactivity</b>	Human
<b>Host</b>	Rabbit
<b>Clonality</b>	Polyclonal
<b>Isotype</b>	Rabbit IgG
<b>Calculated MW</b>	36598
<b>Antigen Region</b>	194-229

## Additional Information

---

<b>Gene ID</b>	79370
<b>Other Names</b>	Apoptosis facilitator Bcl-2-like protein 14, Bcl2-L-14, Apoptosis regulator Bcl-G, BCL2L14, BCLG
<b>Target/Specificity</b>	This Bcl antibody is generated from rabbits immunized with a KLH conjugated synthetic peptide between 194-229 amino acids from human Bcl.
<b>Dilution</b>	WB~1:1000 IHC-P~1:100~500 E~Use at an assay dependent concentration.
<b>Format</b>	Purified polyclonal antibody supplied in PBS with 0.09% (W/V) sodium azide. This antibody is prepared by Saturated Ammonium Sulfate (SAS) precipitation followed by dialysis against PBS.
<b>Storage</b>	Maintain refrigerated at 2-8°C for up to 2 weeks. For long term storage store at -20°C in small aliquots to prevent freeze-thaw cycles.
<b>Precautions</b>	Bcl-G BH3 Domain Antibody is for research use only and not for use in diagnostic or therapeutic procedures.

## Protein Information

---

<b>Name</b>	BCL2L14
<b>Synonyms</b>	BCLG
<b>Function</b>	Plays a role in apoptosis.
<b>Cellular Location</b>	Cytoplasm. [Isoform 2]: Endomembrane system. Note=Predominantly localized to cytosolic organelles

## Tissue Location

Isoform 1 is widely expressed. Isoform 2 is testis- specific.

## Background

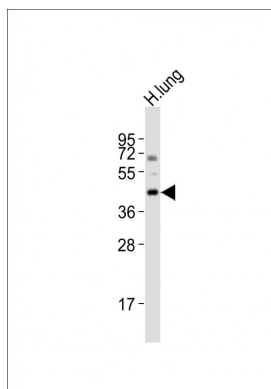
Bcl-G belongs to the BCL2 protein family. BCL2 family members form hetero- or homodimers and act as anti- or pro-apoptotic regulators that are involved in a wide variety of cellular activities. Overexpression of Bcl-G has been shown to induce apoptosis in cells.

## References

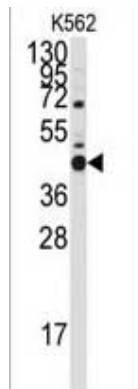
Ozalp, S.S., et al., Eur J Gynaecol Oncol 23(5):419-422 (2002).

Guo, B., et al., J. Biol. Chem. 276(4):2780-2785 (2001).

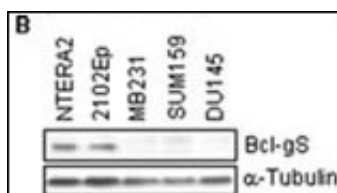
## Images



Anti-Bcl-G-BH3 Antibody at 1:2000 dilution + human lung lysates Lysates/proteins at 20 µg per lane. Secondary Goat Anti-Rabbit IgG, (H+L), Peroxidase conjugated at 1/10000 dilution Predicted band size : 37 kDa  
Blocking/Dilution buffer: 5% NFDm/TBST.

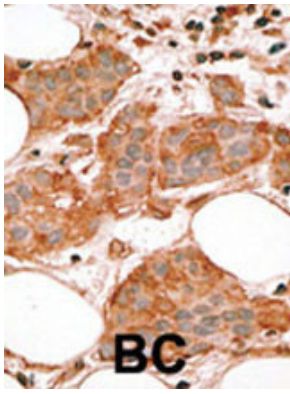


Western blot analysis of anti-Bcl-G BH3 Domain Pab (Cat. #AP1304a) in K562 cell line lysates (35ug/lane). Bcl-G BH3 Domain (arrow) was detected using the purified Pab.



Cell lysates were subjected to Western blotting to determine the expression of Bcl-gS protein. The levels of alpha-tubulin were determined to assure equal loading.

Formalin-fixed and paraffin-embedded human cancer tissue reacted with the primary antibody, which was peroxidase-conjugated to the secondary antibody, followed by AEC staining. This data demonstrates the use of this antibody for immunohistochemistry; clinical relevance has not been evaluated. BC = breast carcinoma; HC = hepatocarcinoma.



## Citations

---

- [A novel role for proline- and acid-rich basic region leucine zipper \(PAR bZIP\) proteins in the transcriptional regulation of a BH3-only proapoptotic gene.](#)

Please note: All products are 'FOR RESEARCH USE ONLY. NOT FOR USE IN DIAGNOSTIC OR THERAPEUTIC PROCEDURES'.