

# MPP3 Antibody (C-term)

Affinity Purified Rabbit Polyclonal Antibody (Pab)

Catalog # AP13068b

## Product Information

---

<b>Application</b>	WB, IF, FC, E
<b>Primary Accession</b>	<a href="#">Q13368</a>
<b>Other Accession</b>	<a href="#">NP_001923.2</a>
<b>Reactivity</b>	Human
<b>Host</b>	Rabbit
<b>Clonality</b>	Polyclonal
<b>Isotype</b>	Rabbit IgG
<b>Clone Names</b>	RB33005
<b>Calculated MW</b>	66152
<b>Antigen Region</b>	406-434

## Additional Information

---

<b>Gene ID</b>	4356
<b>Other Names</b>	MAGUK p55 subfamily member 3, Discs large homolog 3, Protein MPP3, MPP3, DLG3
<b>Target/Specificity</b>	This MPP3 antibody is generated from rabbits immunized with a KLH conjugated synthetic peptide between 406-434 amino acids from the C-terminal region of human MPP3.
<b>Dilution</b>	WB~~1:1000 IF~~1:10~50 FC~~1:10~50 E~~Use at an assay dependent concentration.
<b>Format</b>	Purified polyclonal antibody supplied in PBS with 0.09% (W/V) sodium azide. This antibody is purified through a protein A column, followed by peptide affinity purification.
<b>Storage</b>	Maintain refrigerated at 2-8°C for up to 2 weeks. For long term storage store at -20°C in small aliquots to prevent freeze-thaw cycles.
<b>Precautions</b>	MPP3 Antibody (C-term) is for research use only and not for use in diagnostic or therapeutic procedures.

## Protein Information

---

<b>Name</b>	MPP3 {ECO:0000303 PubMed:16519681, ECO:0000312 HGNC:HGNC:7221}
<b>Function</b>	Participates in cell spreading through the phosphoinositide- 3-kinase (PI3K) pathway by connecting CADM1 to DLG1 and the regulatory subunit of

phosphoinositide-3-kinase (PI3K) (PubMed:[24503895](#)). Stabilizes HTR2C at the plasma membrane and prevents its desensitization. May participate in the maintenance of adherens junctions (By similarity).

#### Cellular Location

Cell membrane. Apical cell membrane. Cell junction, adherens junction. Note=Localized in apical villi of Mueller glia cells (By similarity). Localized at the apical membrane in the developing cortex and colocalized with apical proteins and adherens junction proteins (By similarity). Localized at the outer limiting membrane (OLM), and outer plexiform (OPL) of retina (PubMed:16519681). {ECO:0000250|UniProtKB:O88910, ECO:0000269|PubMed:16519681}

#### Tissue Location

Expressed in retina (at protein level) at the subapical region (SAR) adjacent to adherens junctions at the OLM, and at the OPL.

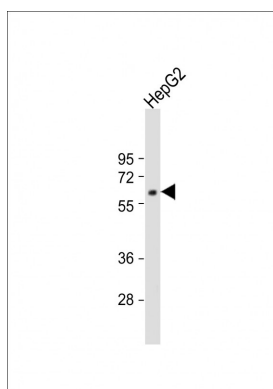
## Background

This gene product is a member of a family of membrane-associated proteins termed MAGUKs (membrane-associated guanylate kinase homologs). MAGUKs interact with the cytoskeleton and regulate cell proliferation, signaling pathways, and intracellular junctions. This protein contains a conserved sequence, called the SH3 (src homology 3) motif, found in several other proteins that associate with the cytoskeleton and are suspected to play important roles in signal transduction. Alternatively spliced transcript variants have been identified. One transcript variant is experimentally supported, but it doesn't encode a protein.

## References

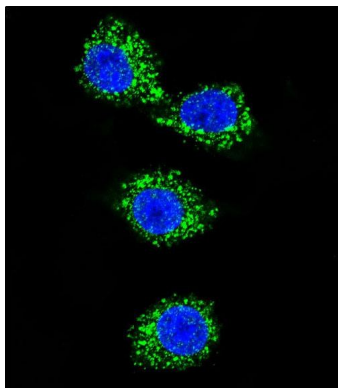
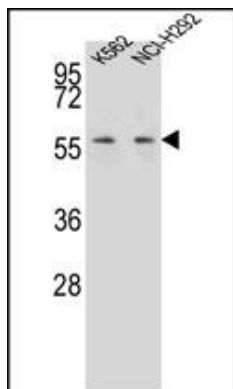
Qin, L., et al. Zhonghua Gan Zang Bing Za Zhi 15(7):509-512(2007)  
Kantardzhieva, A., et al. FEBS J. 273(6):1152-1165(2006)  
Stelzl, U., et al. Cell 122(6):957-968(2005)  
Fukuhara, H., et al. Oncogene 22(40):6160-6165(2003)  
Shin, B.K., et al. J. Biol. Chem. 278(9):7607-7616(2003)

## Images

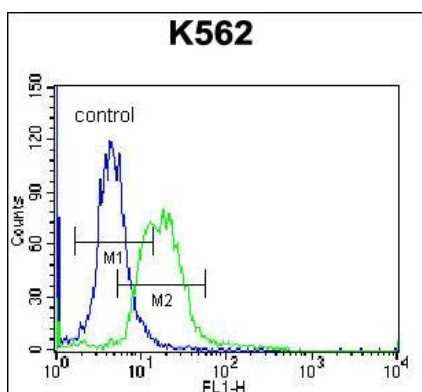


Anti-MPP3 Antibody (C-term) at 1:1000 dilution + HepG2 whole cell lysate Lysates/proteins at 20 µg per lane. Secondary Goat Anti-Rabbit IgG, (H+L), Peroxidase conjugated at 1/10000 dilution. Predicted band size : 66 kDa Blocking/Dilution buffer: 5% NFDM/TBST.

MPP3 Antibody (C-term) (Cat. #AP13068b) western blot analysis in K562,NCI-H292 cell line lysates (35ug/lane).This demonstrates the MPP3 antibody detected the MPP3 protein (arrow).



Confocal immunofluorescent analysis of MPP3 Antibody (C-term)(Cat#AP13068b) with MDA-MB231 cell followed by Alexa Fluor 488-conjugated goat anti-rabbit IgG (green).DAPI was used to stain the cell nuclear (blue).



MPP3 Antibody (C-term) (Cat. #AP13068b) flow cytometric analysis of K562 cells (right histogram) compared to a negative control cell (left histogram).FITC-conjugated donkey-anti-rabbit secondary antibodies were used for the analysis.

Please note: All products are 'FOR RESEARCH USE ONLY. NOT FOR USE IN DIAGNOSTIC OR THERAPEUTIC PROCEDURES'.