

# CCDC55 Antibody (N-term)

Affinity Purified Rabbit Polyclonal Antibody (Pab)

Catalog # AP13079a

## Product Information

---

<b>Application</b>	WB, E
<b>Primary Accession</b>	<a href="#">Q9H0G5</a>
<b>Other Accession</b>	<a href="#">Q4FZU3</a> , <a href="#">Q5NCR9</a> , <a href="#">Q2KIC0</a> , <a href="#">NP_115517.1</a>
<b>Reactivity</b>	Human
<b>Predicted</b>	Bovine, Mouse, Rat
<b>Host</b>	Rabbit
<b>Clonality</b>	Polyclonal
<b>Isotype</b>	Rabbit IgG
<b>Clone Names</b>	RB33046
<b>Calculated MW</b>	66390
<b>Antigen Region</b>	92-121

## Additional Information

---

<b>Gene ID</b>	84081
<b>Other Names</b>	Nuclear speckle splicing regulatory protein 1, Coiled-coil domain-containing protein 55, Nuclear speckle-related protein 70, NSrp70, NSRP1, CCDC55, NSRP70
<b>Target/Specificity</b>	This CCDC55 antibody is generated from rabbits immunized with a KLH conjugated synthetic peptide between 92-121 amino acids from the N-terminal region of human CCDC55.
<b>Dilution</b>	WB~~1:1000 E~~Use at an assay dependent concentration.
<b>Format</b>	Purified polyclonal antibody supplied in PBS with 0.09% (W/V) sodium azide. This antibody is purified through a protein A column, followed by peptide affinity purification.
<b>Storage</b>	Maintain refrigerated at 2-8°C for up to 2 weeks. For long term storage store at -20°C in small aliquots to prevent freeze-thaw cycles.
<b>Precautions</b>	CCDC55 Antibody (N-term) is for research use only and not for use in diagnostic or therapeutic procedures.

## Protein Information

---

<b>Name</b>	NSRP1
<b>Synonyms</b>	CCDC55, NSRP70

<b>Function</b>	RNA-binding protein that mediates pre-mRNA alternative splicing regulation.
<b>Cellular Location</b>	Nucleus. Nucleus speckle. Note=Colocalizes with splicing factors SRSF1 and SRSF2 in speckles
<b>Tissue Location</b>	Expressed in dendritic cells, T-cells, B-cells and natural killer cells. Expressed in secondary lymphoid organs such as spleen and mesenteric, axillary and brachial lymph nodes

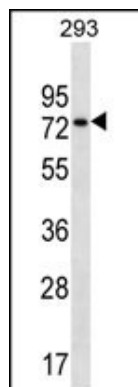
## References

---

Horikawa, Y., et al. Clin. Cancer Res. 14(23):7956-7962(2008)  
Sugiyama, N., et al. Mol. Cell Proteomics 6(6):1103-1109(2007)  
Olsen, J.V., et al. Cell 127(3):635-648(2006)  
Olsen, J.V., et al. Cell 127(3):635-648(2006)  
Beausoleil, S.A., et al. Nat. Biotechnol. 24(10):1285-1292(2006)

## Images

---



CCDC55 Antibody (N-term) (Cat. #AP13079a) western blot analysis in 293 cell line lysates (35ug/lane). This demonstrates the CCDC55 antibody detected the CCDC55 protein (arrow).

Please note: All products are 'FOR RESEARCH USE ONLY. NOT FOR USE IN DIAGNOSTIC OR THERAPEUTIC PROCEDURES'.