

RPL27 Antibody (C-term)

Affinity Purified Rabbit Polyclonal Antibody (Pab)

Catalog # AP13126b

Product Information

Application	WB, IHC-P, E
Primary Accession	P61353
Other Accession	P61354 , A1XQU5 , P61358 , Q4R8Z4 , Q7ZV82 , P61355 , P61356 , NP_000979.1
Reactivity	Human, Mouse
Predicted	Bovine, Chicken, Zebrafish, Monkey, Pig, Rat
Host	Rabbit
Clonality	Polyclonal
Isotype	Rabbit IgG
Clone Names	RB32393
Calculated MW	15798
Antigen Region	91-120

Additional Information

Gene ID	6155
Other Names	60S ribosomal protein L27, RPL27
Target/Specificity	This RPL27 antibody is generated from rabbits immunized with a KLH conjugated synthetic peptide between 91-120 amino acids from the C-terminal region of human RPL27.
Dilution	WB~~1:1000 IHC-P~~1:100~500 E~~Use at an assay dependent concentration.
Format	Purified polyclonal antibody supplied in PBS with 0.09% (W/V) sodium azide. This antibody is purified through a protein A column, followed by peptide affinity purification.
Storage	Maintain refrigerated at 2-8°C for up to 2 weeks. For long term storage store at -20°C in small aliquots to prevent freeze-thaw cycles.
Precautions	RPL27 Antibody (C-term) is for research use only and not for use in diagnostic or therapeutic procedures.

Protein Information

Name	RPL27
Function	Component of the large ribosomal subunit (PubMed: 12962325 , PubMed: 23636399 , PubMed: 25901680 , PubMed: 25957688 , PubMed: 32669547). Required for proper rRNA processing and maturation of

28S and 5.8S rRNAs (PubMed:[25424902](#)).

Cellular Location

Cytoplasm, cytosol. Cytoplasm Rough endoplasmic reticulum {ECO:0000250|UniProtKB:A1XQU5} Note=Detected on cytosolic polysomes (PubMed:25957688). Detected in ribosomes that are associated with the rough endoplasmic reticulum (By similarity). {ECO:0000250|UniProtKB:A1XQU5, ECO:0000269|PubMed:25957688}

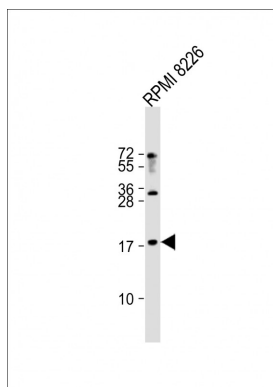
Background

Ribosomes, the organelles that catalyze protein synthesis, consist of a small 40S subunit and a large 60S subunit. Together these subunits are composed of 4 RNA species and approximately 80 structurally distinct proteins. This gene encodes a ribosomal protein that is a component of the 60S subunit. The protein belongs to the L27E family of ribosomal proteins. It is located in the cytoplasm. As is typical for genes encoding ribosomal proteins, there are multiple processed pseudogenes of this gene dispersed through the genome.

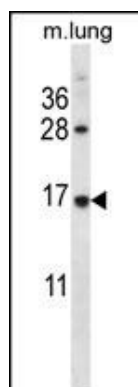
References

Maggi, L.B. Jr., et al. Mol. Cell. Biol. 28(23):7050-7065(2008)
Andersen, J.S., et al. Nature 433(7021):77-83(2005)
Kapp, L.D., et al. Annu. Rev. Biochem. 73, 657-704 (2004) :
Mazumder, B., et al. Cell 115(2):187-198(2003)
Yoshihama, M., et al. Genome Res. 12(3):379-390(2002)

Images

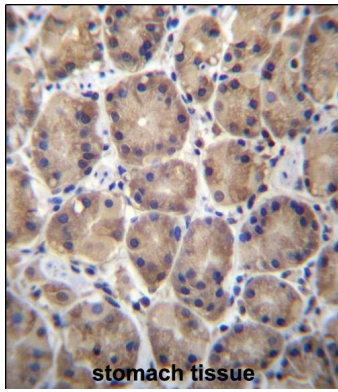


Anti-RPL27 Antibody (C-term) at 1:4000 dilution + RPMI 8226 whole cell lysate Lysates/proteins at 20 µg per lane. Secondary Goat Anti-Rabbit IgG, (H+L), Peroxidase conjugated at 1/10000 dilution. Predicted band size : 16 kDa Blocking/Dilution buffer: 5% NFDM/TBST.



RPL27 Antibody (C-term) (Cat. #AP13126b) western blot analysis in mouse lung tissue lysates (35ug/lane). This demonstrates the RPL27 antibody detected the RPL27 protein (arrow).

RPL27 Antibody (C-term) (Cat. #AP13126b) immunohistochemistry analysis in formalin fixed and paraffin embedded human stomach tissue



followed by peroxidase conjugation of the secondary antibody and DAB staining. This data demonstrates the use of RPL27 Antibody (C-term) for immunohistochemistry. Clinical relevance has not been evaluated.

Please note: All products are 'FOR RESEARCH USE ONLY. NOT FOR USE IN DIAGNOSTIC OR THERAPEUTIC PROCEDURES'.