

Bad Antibody (Center)

Affinity Purified Rabbit Polyclonal Antibody (Pab)

Catalog # AP1314C

Product Information

Application	WB, IHC-P, E
Primary Accession	Q92934
Reactivity	Human
Host	Rabbit
Clonality	Polyclonal
Isotype	Rabbit IgG
Clone Names	RB06939
Calculated MW	18392
Antigen Region	53-81

Additional Information

Gene ID	572
Other Names	Bcl2-associated agonist of cell death, BAD, Bcl-2-binding component 6, Bcl-2-like protein 8, Bcl2-L-8, Bcl-xL/Bcl-2-associated death promoter, Bcl2 antagonist of cell death, BAD, BBC6, BCL2L8
Target/Specificity	This Bad antibody is generated from rabbits immunized with a KLH conjugated synthetic peptide between 53-81 amino acids from the Central region of human Bad.
Dilution	WB~~1:1000 IHC-P~~1:100~500 E~~Use at an assay dependent concentration.
Format	Purified polyclonal antibody supplied in PBS with 0.09% (W/V) sodium azide. This antibody is purified through a protein A column, followed by peptide affinity purification.
Storage	Maintain refrigerated at 2-8°C for up to 2 weeks. For long term storage store at -20°C in small aliquots to prevent freeze-thaw cycles.
Precautions	Bad Antibody (Center) is for research use only and not for use in diagnostic or therapeutic procedures.

Protein Information

Name	BAD
Synonyms	BBC6, BCL2L8
Function	Promotes cell death. Successfully competes for the binding to Bcl-X(L), Bcl-2

and Bcl-W, thereby affecting the level of heterodimerization of these proteins with BAX. Can reverse the death repressor activity of Bcl-X(L), but not that of Bcl-2 (By similarity). Appears to act as a link between growth factor receptor signaling and the apoptotic pathways.

Cellular Location

Mitochondrion outer membrane. Cytoplasm {ECO:0000250|UniProtKB:Q61337}. Note=Colocalizes with HIF3A in the cytoplasm (By similarity). Upon phosphorylation, locates to the cytoplasm. {ECO:0000250|UniProtKB:Q61337}

Tissue Location

Expressed in a wide variety of tissues.

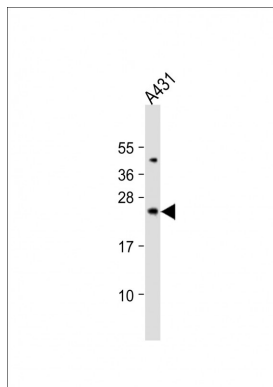
Background

Bad is a member of the BCL-2 family. BCL-2 family members are known to be regulators of programmed cell death. This protein positively regulates cell apoptosis by forming heterodimers with BCL-xL and BCL-2, and reversing their death repressor activity. Proapoptotic activity of this protein is regulated through its phosphorylation. Protein kinases AKT and MAP kinase, as well as protein phosphatase calcineurin were found to be involved in the regulation of this protein.

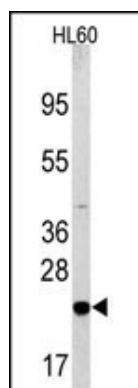
References

Lee, J.W., et al., Carcinogenesis 25(8):1371-1376 (2004).
Zhang, B., et al., Mol. Cell. Biol. 24(14):6205-6214 (2004).
Ong, C.S., et al., Oncol. Rep. 11(3):727-733 (2004).
Yan, B., et al., J. Biol. Chem. 278(46):45358-45367 (2003).
Taghiyev, A.F., et al., Mol. Cancer Res. 1(7):500-507 (2003).

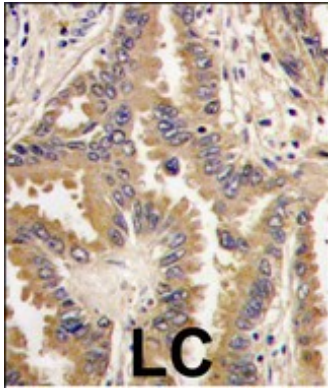
Images



Anti-Bad Antibody at 1:1000 dilution + A431 whole cell lysate Lysates/proteins at 20 µg per lane. Secondary Goat Anti-Rabbit IgG, (H+L), Peroxidase conjugated at 1/10000 dilution. Predicted band size : 18 kDa Blocking/Dilution buffer: 5% NFDM/TBST.



Western blot analysis of anti-Bad Antibody (Center)(Cat.#AP1314c) in HL60 cell line lysates (35ug/lane). Bad(arrow) was detected using the purified Pab.



Formalin-fixed and paraffin-embedded human lung carcinoma tissue reacted with Bad antibody (Center), which was peroxidase-conjugated to the secondary antibody, followed by DAB staining. This data demonstrates the use of this antibody for immunohistochemistry; clinical relevance has not been evaluated.

Citations

- [Photodynamic Therapy Using Indolines-Fused-Triazoles Induces Mitochondrial Apoptosis in Human Non-Melanoma BCC Cells.](#)
- [GABA A receptor \$\pi\$ subunit promotes apoptosis of HTR-8/SVneo trophoblastic cells: Implications in preeclampsia.](#)
- [Involvement of caspases and their upstream regulators in myocardial apoptosis in a rat model of selenium deficiency-induced dilated cardiomyopathy.](#)

Please note: All products are 'FOR RESEARCH USE ONLY. NOT FOR USE IN DIAGNOSTIC OR THERAPEUTIC PROCEDURES'.