

PRLH Antibody (Center)

Affinity Purified Rabbit Polyclonal Antibody (Pab)

Catalog # AP13150c

Product Information

Application	WB, IHC-P, E
Primary Accession	P81277
Other Accession	NP_056977.1
Reactivity	Mouse
Host	Rabbit
Clonality	Polyclonal
Isotype	Rabbit IgG
Clone Names	RB32599
Calculated MW	9639
Antigen Region	27-56

Additional Information

Gene ID	51052
Other Names	Prolactin-releasing peptide, PrRP, Prolactin-releasing hormone, Prolactin-releasing peptide PrRP31, Prolactin-releasing peptide PrRP20, PRLH, PRH
Target/Specificity	This PRLH antibody is generated from rabbits immunized with a KLH conjugated synthetic peptide between 27-56 amino acids from the Central region of human PRLH.
Dilution	WB~~1:1000 IHC-P~~1:100~500 E~~Use at an assay dependent concentration.
Format	Purified polyclonal antibody supplied in PBS with 0.09% (W/V) sodium azide. This antibody is purified through a protein A column, followed by peptide affinity purification.
Storage	Maintain refrigerated at 2-8°C for up to 2 weeks. For long term storage store at -20°C in small aliquots to prevent freeze-thaw cycles.
Precautions	PRLH Antibody (Center) is for research use only and not for use in diagnostic or therapeutic procedures.

Protein Information

Name	PRLH
Synonyms	PRH

Function	Stimulates prolactin (PRL) release and regulates the expression of prolactin through its receptor GPR10. May stimulate lactotrophs directly to secrete PRL.
Cellular Location	Secreted.
Tissue Location	Medulla oblongata and hypothalamus.

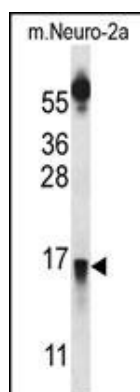
Background

Stimulates prolactin (PRL) release and regulates the expression of prolactin through its receptor GPR10. May stimulate lactotrophs directly to secrete PRL.

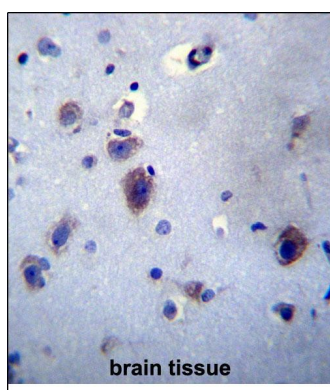
References

Lagerstrom, M.C., et al. Ann. N. Y. Acad. Sci. 1040, 368-370 (2005) :
Takahashi, K., et al. Peptides 23(6):1135-1140(2002)
Yasui, Y., et al. Endocr. J. 48(3):397-401(2001)
Langmead, C.J., et al. Br. J. Pharmacol. 131(4):683-688(2000)
Zhang, X., et al. J. Clin. Endocrinol. Metab. 84(12):4652-4655(1999)

Images



PRLH Antibody (Center) (Cat. #AP13150c) western blot analysis in mouse Neuro-2a cell line lysates (35ug/lane). This demonstrates the PRLH antibody detected the PRLH protein (arrow).



PRLH Antibody (Center) (Cat. #AP13150c) immunohistochemistry analysis in formalin fixed and paraffin embedded human brain tissue followed by peroxidase conjugation of the secondary antibody and DAB staining. This data demonstrates the use of PRLH Antibody (Center) for immunohistochemistry. Clinical relevance has not been evaluated.

Please note: All products are 'FOR RESEARCH USE ONLY. NOT FOR USE IN DIAGNOSTIC OR THERAPEUTIC PROCEDURES'.