

CAPN8 Antibody (Center)

Affinity Purified Rabbit Polyclonal Antibody (Pab)

Catalog # AP13161c

Product Information

Application	WB, IHC-P, E
Primary Accession	A6NHCO
Other Accession	NP_001137434.1
Reactivity	Human
Host	Rabbit
Clonality	Polyclonal
Isotype	Rabbit IgG
Clone Names	RB32686
Calculated MW	79144
Antigen Region	290-318

Additional Information

Gene ID	388743
Other Names	Calpain-8, New calpain 2, nCL-2, Stomach-specific M-type calpain, CAPN8, NCL2
Target/Specificity	This CAPN8 antibody is generated from rabbits immunized with a KLH conjugated synthetic peptide between 290-318 amino acids from the Central region of human CAPN8.
Dilution	WB~~1:1000 IHC-P~~1:100~500 E~~Use at an assay dependent concentration.
Format	Purified polyclonal antibody supplied in PBS with 0.09% (W/V) sodium azide. This antibody is purified through a protein A column, followed by peptide affinity purification.
Storage	Maintain refrigerated at 2-8°C for up to 2 weeks. For long term storage store at -20°C in small aliquots to prevent freeze-thaw cycles.
Precautions	CAPN8 Antibody (Center) is for research use only and not for use in diagnostic or therapeutic procedures.

Protein Information

Name	CAPN8
Synonyms	NCL2
Function	Calcium-regulated non-lysosomal thiol-protease. Involved in membrane

trafficking in the gastric surface mucus cells (pit cells) and may involve the membrane trafficking of mucus cells via interactions with coat protein. Proteolytically cleaves the beta-subunit of coatomer complex (By similarity).

Cellular Location Cytoplasm. Golgi apparatus

Tissue Location Stomach.

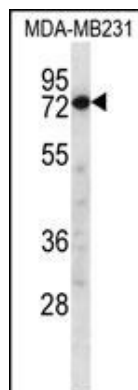
Background

Calcium-regulated non-lysosomal thiol-protease. Involved in membrane trafficking in the gastric surface mucus cells (pit cells) and may involve the membrane trafficking of mucus cells via interactions with coat protein. Proteolytically cleaves the beta-subunit of coatomer complex (By similarity).

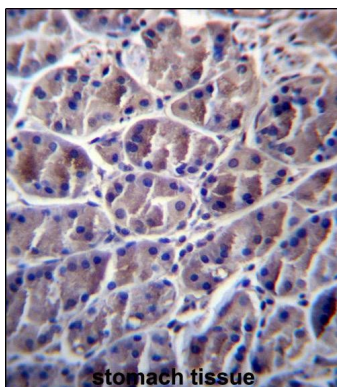
References

Hata, S., et al. J. Biol. Chem. 282(38):27847-27856(2007)
Oh, J.H., et al. Mamm. Genome 16(12):942-954(2005)
Hata, S., et al. J. Mol. Evol. 53(3):191-203(2001)
Huang, Y., et al. Trends Mol Med 7(8):355-362(2001)
Harrington, J.J., et al. Nat. Biotechnol. 19(5):440-445(2001)

Images



CAPN8 Antibody (Center) (Cat. #AP13161c) western blot analysis in MDA-MB231 cell line lysates (35ug/lane). This demonstrates the CAPN8 antibody detected the CAPN8 protein (arrow).



CAPN8 Antibody (Center) (Cat. #AP13161c) immunohistochemistry analysis in formalin fixed and paraffin embedded human stomach tissue followed by peroxidase conjugation of the secondary antibody and DAB staining. This data demonstrates the use of CAPN8 Antibody (Center) for immunohistochemistry. Clinical relevance has not been evaluated.

Please note: All products are 'FOR RESEARCH USE ONLY. NOT FOR USE IN DIAGNOSTIC OR THERAPEUTIC PROCEDURES'.