

CNTLN Antibody (N-term)

Affinity Purified Rabbit Polyclonal Antibody (Pab)

Catalog # AP13167A

Product Information

Application	IHC-P, WB, E
Primary Accession	Q9NXG0
Other Accession	NP_001107867.1 , NP_060208.2
Reactivity	Human
Host	Rabbit
Clonality	Polyclonal
Isotype	Rabbit IgG
Clone Names	RB32726
Calculated MW	161571
Antigen Region	199-227

Additional Information

Gene ID	54875
Other Names	Centlein, Centrosomal protein, CNTLN, C9orf101, C9orf39
Target/Specificity	This CNTLN antibody is generated from rabbits immunized with a KLH conjugated synthetic peptide between 199-227 amino acids from the N-terminal region of human CNTLN.
Dilution	IHC-P~~1:100~500 WB~~1:1000 E~~Use at an assay dependent concentration.
Format	Purified polyclonal antibody supplied in PBS with 0.09% (W/V) sodium azide. This antibody is purified through a protein A column, followed by peptide affinity purification.
Storage	Maintain refrigerated at 2-8°C for up to 2 weeks. For long term storage store at -20°C in small aliquots to prevent freeze-thaw cycles.
Precautions	CNTLN Antibody (N-term) is for research use only and not for use in diagnostic or therapeutic procedures.

Protein Information

Name	CNTLN
Synonyms	C9orf101, C9orf39
Function	Required for centrosome cohesion and recruitment of CEP68 to centrosomes.

Cellular Location

Cytoplasm, cytoskeleton, microtubule organizing center, centrosome, centriole Note=Colocalizes with gamma-tubulin during interphase and mitosis Appears to associate with the mother centriole during G1 phase and with daughter centrioles towards G1/S phase (By similarity). Localizes to the proximal ends of the centrioles (PubMed:24554434). Levels are high at interphase centrosomes but are reduced on mitotic spindle poles (PubMed:24554434). {ECO:0000250 | UniProtKB:A9ZSY0, ECO:0000269 | PubMed:24554434}

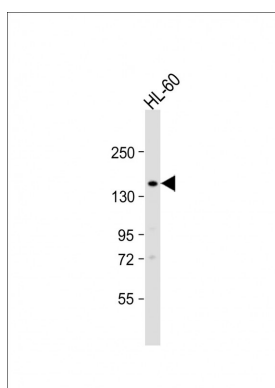
Background

The specific function of this protein remains unknown.

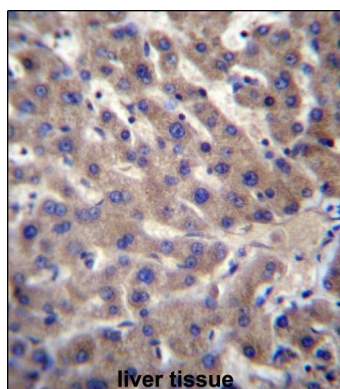
References

Bailey, S.D., et al. Diabetes Care (2010) In press :
Rose, J.E., et al. Mol. Med. 16 (7-8), 247-253 (2010) :
Talmud, P.J., et al. Am. J. Hum. Genet. 85(5):628-642(2009)
Song, H., et al. Nat. Genet. 41(9):996-1000(2009)
Makino, K., et al. Biochem. Biophys. Res. Commun. 366(4):958-962(2008)

Images



Anti-CNTLN Antibody (N-term) at 1:1000 dilution + HL-60 whole cell lysate Lysates/proteins at 20 µg per lane. Secondary Goat Anti-Rabbit IgG, (H+L), Peroxidase conjugated at 1/10000 dilution. Predicted band size : 162 kDa Blocking/Dilution buffer: 5% NFDM/TBST.



CNTLN Antibody (N-term) (Cat. #AP13167a) immunohistochemistry analysis in formalin fixed and paraffin embedded human liver tissue followed by peroxidase conjugation of the secondary antibody and DAB staining. This data demonstrates the use of CNTLN Antibody (N-term) for immunohistochemistry. Clinical relevance has not been evaluated.

Please note: All products are 'FOR RESEARCH USE ONLY. NOT FOR USE IN DIAGNOSTIC OR THERAPEUTIC PROCEDURES'.