

LUZP2 Antibody (N-term)

Affinity Purified Rabbit Polyclonal Antibody (Pab)

Catalog # AP13174a

Product Information

Application	WB, E
Primary Accession	Q86TE4
Other Accession	Q8BGY3 , NP_001009909.2
Reactivity	Human
Predicted	Mouse
Host	Rabbit
Clonality	Polyclonal
Isotype	Rabbit IgG
Clone Names	RB32757
Calculated MW	38958
Antigen Region	96-124

Additional Information

Gene ID	338645
Other Names	Leucine zipper protein 2, LUZP2
Target/Specificity	This LUZP2 antibody is generated from rabbits immunized with a KLH conjugated synthetic peptide between 96-124 amino acids from the N-terminal region of human LUZP2.
Dilution	WB~~1:1000 E~~Use at an assay dependent concentration.
Format	Purified polyclonal antibody supplied in PBS with 0.09% (W/V) sodium azide. This antibody is purified through a protein A column, followed by peptide affinity purification.
Storage	Maintain refrigerated at 2-8°C for up to 2 weeks. For long term storage store at -20°C in small aliquots to prevent freeze-thaw cycles.
Precautions	LUZP2 Antibody (N-term) is for research use only and not for use in diagnostic or therapeutic procedures.

Protein Information

Name	LUZP2
Cellular Location	Secreted.

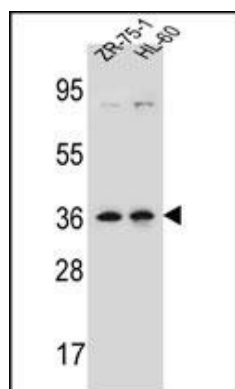
Background

The specific function of this protein remains unknown.

References

Meyer, T.E., et al. PLoS Genet. 6 (8) (2010) :
Rose, J.E., et al. Mol. Med. 16 (7-8), 247-253 (2010) :
Benyamin, B., et al. Am. J. Hum. Genet. 84(1):60-65(2009)
Uhl, G.R., et al. Arch. Gen. Psychiatry 65(6):683-693(2008)
Clark, H.F., et al. Genome Res. 13(10):2265-2270(2003)

Images



LUZP2 Antibody (N-term) (Cat. #AP13174a) western blot analysis in ZR-75-1,HL-60 cell line lysates (35ug/lane).This demonstrates the LUZP2 antibody detected the LUZP2 protein (arrow).

Please note: All products are 'FOR RESEARCH USE ONLY. NOT FOR USE IN DIAGNOSTIC OR THERAPEUTIC PROCEDURES'.