

HEBP2 Antibody (N-term)

Affinity Purified Rabbit Polyclonal Antibody (Pab)

Catalog # AP13181a

Product Information

Application	WB, E
Primary Accession	Q9Y5Z4
Other Accession	Q9WU63 , NP_055135.1
Reactivity	Human
Predicted	Mouse
Host	Rabbit
Clonality	Polyclonal
Isotype	Rabbit IgG
Clone Names	RB32811
Calculated MW	22875
Antigen Region	18-47

Additional Information

Gene ID	23593
Other Names	Heme-binding protein 2, Placental protein 23, PP23, Protein SOUL, HEBP2, C6orf34, SOUL
Target/Specificity	This HEBP2 antibody is generated from rabbits immunized with a KLH conjugated synthetic peptide between 18-47 amino acids from the N-terminal region of human HEBP2.
Dilution	WB~~1:1000 E~~Use at an assay dependent concentration.
Format	Purified polyclonal antibody supplied in PBS with 0.09% (W/V) sodium azide. This antibody is purified through a protein A column, followed by peptide affinity purification.
Storage	Maintain refrigerated at 2-8°C for up to 2 weeks. For long term storage store at -20°C in small aliquots to prevent freeze-thaw cycles.
Precautions	HEBP2 Antibody (N-term) is for research use only and not for use in diagnostic or therapeutic procedures.

Protein Information

Name	HEBP2
Synonyms	C6orf34, SOUL

Function	Can promote mitochondrial permeability transition and facilitate necrotic cell death under different types of stress conditions.
Cellular Location	Cytoplasm. Mitochondrion. Note=Mainly localized to the cytoplasm with a much lower abundance in the mitochondrion
Tissue Location	Detected in placenta..

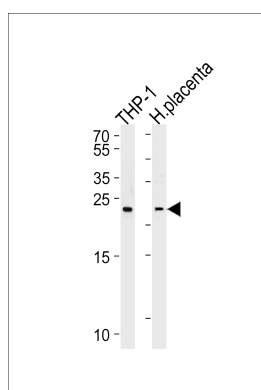
Background

HEBP2 can promote mitochondrial permeability transition and facilitate necrotic cell death under different types of stress conditions.

References

Szigeti, A., et al. J. Biol. Chem. 285(3):2140-2151(2010)
Freire, F., et al. Acta Crystallogr. Sect. F Struct. Biol. Cryst. Commun. 65 (PT 7), 723-726 (2009) :
Szigeti, A., et al. FEBS Lett. 580(27):6447-6454(2006)
Mungall, A.J., et al. Nature 425(6960):805-811(2003)
Liu, L., et al. Genomics 79(1):124-136(2002)

Images



Western blot analysis of lysates from THP-1 cell line and human placenta tissue lysates (from left to right), using HEBP2 Antibody (N-term)(Cat. #AP13181a). AP13181a was diluted at 1:1000 at each lane. A goat anti-rabbit IgG H&L(HRP) at 1:5000 dilution was used as the secondary antibody. Lysates at 35ug per lane.

Please note: All products are 'FOR RESEARCH USE ONLY. NOT FOR USE IN DIAGNOSTIC OR THERAPEUTIC PROCEDURES'.