

LHFPL1 Antibody (N-term)

Affinity Purified Rabbit Polyclonal Antibody (Pab)

Catalog # AP13197a

Product Information

Application	WB, E
Primary Accession	Q86WI0
Other Accession	NP_835469.1
Reactivity	Human
Host	Rabbit
Clonality	Polyclonal
Isotype	Rabbit IgG
Clone Names	RB32880
Calculated MW	23777
Antigen Region	20-49

Additional Information

Gene ID	340596
Other Names	Lipoma HMGIC fusion partner-like 1 protein, LHFPL1
Target/Specificity	This LHFPL1 antibody is generated from rabbits immunized with a KLH conjugated synthetic peptide between 20-49 amino acids from the N-terminal region of human LHFPL1.
Dilution	WB~~1:1000 E~~Use at an assay dependent concentration.
Format	Purified polyclonal antibody supplied in PBS with 0.09% (W/V) sodium azide. This antibody is purified through a protein A column, followed by peptide affinity purification.
Storage	Maintain refrigerated at 2-8°C for up to 2 weeks. For long term storage store at -20°C in small aliquots to prevent freeze-thaw cycles.
Precautions	LHFPL1 Antibody (N-term) is for research use only and not for use in diagnostic or therapeutic procedures.

Protein Information

Name	LHFPL1 (HGNC:6587)
Cellular Location	Membrane; Multi-pass membrane protein
Tissue Location	Widely expressed. Expressed at high levels in lung, thymus, skeletal muscle, colon and ovary

Background

This gene is a member of the lipoma HMGIC fusion partner (LHFP) gene family, which is a subset of the superfamily of tetraspan transmembrane protein encoding genes. Mutations in one LHFP-like gene result in deafness in humans and mice, and a second LHFP-like gene is fused to a high-mobility group gene in a translocation-associated lipoma. Alternatively spliced transcript variants have been found, but their biological validity has not been determined.

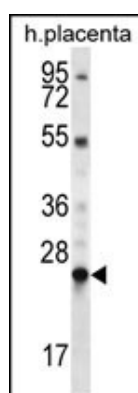
References

Longo-Guess, C.M., et al. Proc. Natl. Acad. Sci. U.S.A. 102(22):7894-7899(2005)

Huang, C., et al. DNA Seq. 15(4):299-302(2004)

Petit, M.M., et al. Genomics 57(3):438-441(1999)

Images



LHFPL1 Antibody (N-term) (Cat. #AP13197a) western blot analysis in human placenta tissue lysates (35ug/lane). This demonstrates the LHFPL1 antibody detected the LHFPL1 protein (arrow).

Please note: All products are 'FOR RESEARCH USE ONLY. NOT FOR USE IN DIAGNOSTIC OR THERAPEUTIC PROCEDURES'.