

# THAP8 Antibody (Center)

Affinity Purified Rabbit Polyclonal Antibody (Pab)

Catalog # AP13209c

## Product Information

---

Application	WB, E
Primary Accession	<a href="#">Q8NA92</a>
Other Accession	<a href="#">NP_689871.1</a>
Reactivity	Human
Host	Rabbit
Clonality	Polyclonal
Isotype	Rabbit IgG
Clone Names	RB32977
Calculated MW	30082
Antigen Region	72-100

## Additional Information

---

Gene ID	199745
Other Names	THAP domain-containing protein 8, THAP8
Target/Specificity	This THAP8 antibody is generated from rabbits immunized with a KLH conjugated synthetic peptide between 72-100 amino acids from the Central region of human THAP8.
Dilution	WB~~1:1000 E~~Use at an assay dependent concentration.
Format	Purified polyclonal antibody supplied in PBS with 0.09% (W/V) sodium azide. This antibody is purified through a protein A column, followed by peptide affinity purification.
Storage	Maintain refrigerated at 2-8°C for up to 2 weeks. For long term storage store at -20°C in small aliquots to prevent freeze-thaw cycles.
Precautions	THAP8 Antibody (Center) is for research use only and not for use in diagnostic or therapeutic procedures.

## Protein Information

---

Name	THAP8
------	-------

## Background

---

The specific function of this protein remains unknown.

## References

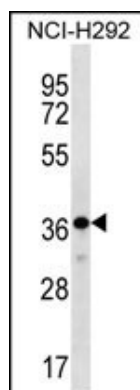
---

Lamesch, P., et al. Genomics 89(3):307-315(2007)

Roussigne, M., et al. Trends Biochem. Sci. 28(2):66-69(2003)

## Images

---



THAP8 Antibody (Center) (Cat. #AP13209c) western blot analysis in NCI-H292 cell line lysates (35ug/lane). This demonstrates the THAP8 antibody detected the THAP8 protein (arrow).

Please note: All products are 'FOR RESEARCH USE ONLY. NOT FOR USE IN DIAGNOSTIC OR THERAPEUTIC PROCEDURES'.