

SSX4 Antibody (Center)

Affinity Purified Rabbit Polyclonal Antibody (Pab)

Catalog # AP13213c

Product Information

Application	WB, E
Primary Accession	O60224
Other Accession	NP_783856.1 , NP_005627.1
Reactivity	Human
Host	Rabbit
Clonality	Polyclonal
Isotype	Rabbit IgG
Clone Names	RB32991
Calculated MW	21858
Antigen Region	63-91

Additional Information

Gene ID	548313;6759
Other Names	Protein SSX4, Cancer/testis antigen 54, CT54, SSX4, SSX4A
Target/Specificity	This SSX4 antibody is generated from rabbits immunized with a KLH conjugated synthetic peptide between 63-91 amino acids from the Central region of human SSX4.
Dilution	WB~~1:1000 E~~Use at an assay dependent concentration.
Format	Purified polyclonal antibody supplied in PBS with 0.09% (W/V) sodium azide. This antibody is purified through a protein A column, followed by peptide affinity purification.
Storage	Maintain refrigerated at 2-8°C for up to 2 weeks. For long term storage store at -20°C in small aliquots to prevent freeze-thaw cycles.
Precautions	SSX4 Antibody (Center) is for research use only and not for use in diagnostic or therapeutic procedures.

Protein Information

Name	SSX4
Synonyms	SSX4A
Function	Could act as a modulator of transcription.

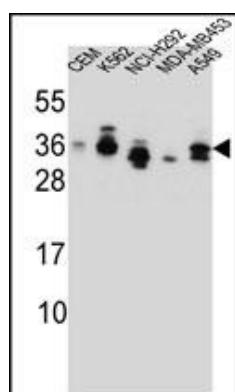
Background

The product of this gene belongs to the family of highly homologous synovial sarcoma X (SSX) breakpoint proteins. These proteins may function as transcriptional repressors. They are also capable of eliciting spontaneously humoral and cellular immune responses in cancer patients, and are potentially useful targets in cancer vaccine-based immunotherapy. SSX1, SSX2 and SSX4 genes have been involved in the t(X;18) translocation characteristically found in all synovial sarcomas. This translocation results in the fusion of the synovial sarcoma translocation gene on chromosome 18 to one of the SSX genes on chromosome X. Chromosome Xp11 contains a segmental duplication resulting in two identical copies of synovial sarcoma, X breakpoint 4, SSX4 and SSX4B, in tail-to-tail orientation. This gene, SSX4B, represents the more centromeric copy. Two transcript variants encoding distinct isoforms have been identified for this gene.

References

Ayyoub, M., et al. J. Immunol. 174(8):5092-5099(2005)
Ross, M.T., et al. Nature 434(7031):325-337(2005)
Gure, A.O., et al. Int. J. Cancer 101(5):448-453(2002)
Brodin, B., et al. Gene 268 (1-2), 173-182 (2001) :
Chen, C.H., et al. Cancer Lett. 164(2):189-195(2001)

Images



SSX4 Antibody (Center) (Cat. #AP13213c) western blot analysis in CEM,K562,NCI-H292,MDA-MB453,A549 cell line lysates (35ug/lane).This demonstrates the SSX4 antibody detected the SSX4 protein (arrow).

Please note: All products are 'FOR RESEARCH USE ONLY. NOT FOR USE IN DIAGNOSTIC OR THERAPEUTIC PROCEDURES'.