

SC65 Antibody (C-term)

Affinity Purified Rabbit Polyclonal Antibody (Pab)

Catalog # AP13238b

Product Information

Application	WB, E
Primary Accession	Q92791
Other Accession	NP_006446.1
Reactivity	Human
Host	Rabbit
Clonality	Polyclonal
Isotype	Rabbit IgG
Clone Names	RB33106
Calculated MW	50381
Antigen Region	361-390

Additional Information

Gene ID	10609
Other Names	Synaptonemal complex protein SC65, Leprecan-like protein 4, Nucleolar autoantigen No55, LEPREL4, NOL55, SC65
Target/Specificity	This SC65 antibody is generated from rabbits immunized with a KLH conjugated synthetic peptide between 361-390 amino acids from the C-terminal region of human SC65.
Dilution	WB~~1:1000 E~~Use at an assay dependent concentration.
Format	Purified polyclonal antibody supplied in PBS with 0.09% (W/V) sodium azide. This antibody is purified through a protein A column, followed by peptide affinity purification.
Storage	Maintain refrigerated at 2-8°C for up to 2 weeks. For long term storage store at -20°C in small aliquots to prevent freeze-thaw cycles.
Precautions	SC65 Antibody (C-term) is for research use only and not for use in diagnostic or therapeutic procedures.

Protein Information

Name	P3H4 (HGNC:16946)
Function	Part of a complex composed of PLOD1, P3H3 and P3H4 that catalyzes hydroxylation of lysine residues in collagen alpha chains and is required for normal assembly and cross-linking of collagen fibrils. Required for normal

bone density and normal skin stability via its role in hydroxylation of lysine residues in collagen alpha chains and in collagen fibril assembly.

Cellular Location

Endoplasmic reticulum

Tissue Location

Detected in fibroblasts (at protein level) (PubMed:23959653). Detected in spleen, prostate, testis, ovary, colon, pancreas, kidney, placenta and heart (PubMed:10952778)

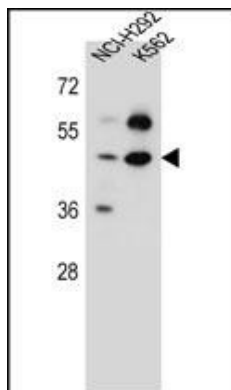
Background

This nucleolar protein was first characterized because it was an autoantigen in cases on interstitial cystitis. The protein, with a predicted molecular weight of 50 kDa, appears to be localized in the particulate compartment of the interphase nucleolus, with a distribution distinct from that of nucleolar protein B23. During mitosis it is associated with chromosomes.

References

Foster, L.J., et al. J. Proteome Res. 5(1):64-75(2006)
Fossa, A., et al. Br. J. Cancer 83(6):743-749(2000)
Ochs, R.L., et al. Mol. Biol. Cell 7(7):1015-1024(1996)

Images



SC65 Antibody (C-term) (Cat. #AP13238b) western blot analysis in NCI-H292, K562 cell line lysates (35ug/lane). This demonstrates the SC65 antibody detected the SC65 protein (arrow).

Please note: All products are 'FOR RESEARCH USE ONLY. NOT FOR USE IN DIAGNOSTIC OR THERAPEUTIC PROCEDURES'.