

# RTDR1 Antibody (N-term)

Affinity Purified Rabbit Polyclonal Antibody (Pab)

Catalog # AP13240a

## Product Information

---

<b>Application</b>	WB, IHC-P, E
<b>Primary Accession</b>	<a href="#">Q9UHP6</a>
<b>Other Accession</b>	<a href="#">NP_055248.1</a>
<b>Reactivity</b>	Human
<b>Host</b>	Rabbit
<b>Clonality</b>	Polyclonal
<b>Isotype</b>	Rabbit IgG
<b>Clone Names</b>	RB33108
<b>Calculated MW</b>	38592
<b>Antigen Region</b>	17-45

## Additional Information

---

<b>Gene ID</b>	27156
<b>Other Names</b>	Rhabdoid tumor deletion region protein 1, RTDR1
<b>Target/Specificity</b>	This RTDR1 antibody is generated from rabbits immunized with a KLH conjugated synthetic peptide between 17-45 amino acids from the N-terminal region of human RTDR1.
<b>Dilution</b>	WB~~1:1000 IHC-P~~1:100~500 E~~Use at an assay dependent concentration.
<b>Format</b>	Purified polyclonal antibody supplied in PBS with 0.09% (W/V) sodium azide. This antibody is purified through a protein A column, followed by peptide affinity purification.
<b>Storage</b>	Maintain refrigerated at 2-8°C for up to 2 weeks. For long term storage store at -20°C in small aliquots to prevent freeze-thaw cycles.
<b>Precautions</b>	RTDR1 Antibody (N-term) is for research use only and not for use in diagnostic or therapeutic procedures.

## Protein Information

---

<b>Name</b>	RSPH14 ( <a href="#">HGNC:13437</a> )
<b>Synonyms</b>	RTDR1
<b>Function</b>	Functions as part of axonemal radial spoke complexes that play an important part in the motility of sperm and cilia.

**Cellular Location**

Cytoplasm, cytoskeleton, flagellum axoneme  
{ECO:0000250|UniProtKB:Q9D3W1}

**Tissue Location**

Expressed in adult cerebellum, spinal cord, spleen, skeletal muscle and some/5 out of 9 rhabdoid tumors. Detected in fetal brain, lung, liver and kidney.

## Background

---

This gene encodes a protein with no known function but with slight similarity to a yeast vacuolar protein. The gene is located in a region deleted in pediatric rhabdoid tumors of the brain, kidney and soft tissues, but mutations in this gene have not been associated with the disease.

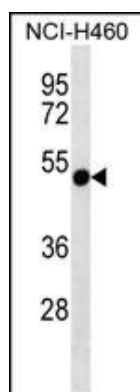
## References

---

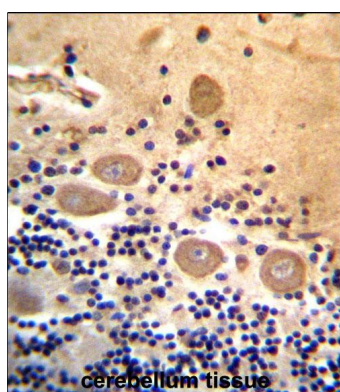
Gudbjartsson, D.F., et al. Nat. Genet. 40(5):609-615(2008)  
Barrios-Rodiles, M., et al. Science 307(5715):1621-1625(2005)  
Collins, J.E., et al. Genome Biol. 5 (10), R84 (2004) :  
Zhou, J., et al. Gene 241(1):133-141(2000)

## Images

---



RTDR1 Antibody (N-term) (Cat. #AP13240a) western blot analysis in NCI-H460 cell line lysates (35ug/lane). This demonstrates the RTDR1 antibody detected the RTDR1 protein (arrow).



RTDR1 Antibody (N-term) (Cat. #AP13240a) immunohistochemistry analysis in formalin fixed and paraffin embedded human cerebellum tissue followed by peroxidase conjugation of the secondary antibody and DAB staining. This data demonstrates the use of RTDR1 Antibody (N-term) for immunohistochemistry. Clinical relevance has not been evaluated.

Please note: All products are 'FOR RESEARCH USE ONLY. NOT FOR USE IN DIAGNOSTIC OR THERAPEUTIC PROCEDURES'.