

TUBB8 Antibody (N-term)

Affinity Purified Rabbit Polyclonal Antibody (Pab)

Catalog # AP13248a

Product Information

| | |
|-------------------|-----------------------------|
| Application | WB, E |
| Primary Accession | Q3ZCM7 |
| Other Accession | NP_817124.1 |
| Reactivity | Human |
| Host | Rabbit |
| Clonality | Polyclonal |
| Isotype | Rabbit IgG |
| Clone Names | RB33120 |
| Calculated MW | 49776 |
| Antigen Region | 34-62 |

Additional Information

| | |
|--------------------|--|
| Gene ID | 347688 |
| Other Names | Tubulin beta-8 chain, TUBB8 |
| Target/Specificity | This TUBB8 antibody is generated from rabbits immunized with a KLH conjugated synthetic peptide between 34-62 amino acids from the N-terminal region of human TUBB8. |
| Dilution | WB~~1:1000 E~~Use at an assay dependent concentration. |
| Format | Purified polyclonal antibody supplied in PBS with 0.09% (W/V) sodium azide. This antibody is purified through a protein A column, followed by peptide affinity purification. |
| Storage | Maintain refrigerated at 2-8°C for up to 2 weeks. For long term storage store at -20°C in small aliquots to prevent freeze-thaw cycles. |
| Precautions | TUBB8 Antibody (N-term) is for research use only and not for use in diagnostic or therapeutic procedures. |

Protein Information

| | |
|----------|---|
| Name | TUBB8 (HGNC:20773) |
| Function | Tubulin is the major constituent of microtubules, a cylinder consisting of laterally associated linear protofilaments composed of alpha- and beta-tubulin heterodimers. Microtubules grow by the addition of GTP-tubulin dimers to the microtubule end, where a stabilizing cap forms. Below the cap, |

tubulin dimers are in GDP-bound state, owing to GTPase activity of alpha-tubulin. TUBB8 has a key role in meiotic spindle assembly and oocyte maturation (PubMed:[26789871](#), PubMed:[34509376](#)).

Cellular Location

Cytoplasm, cytoskeleton. Cytoplasm, cytoskeleton, spindle

Tissue Location

Expressed at a high level in oocytes, at different stages of development.

Background

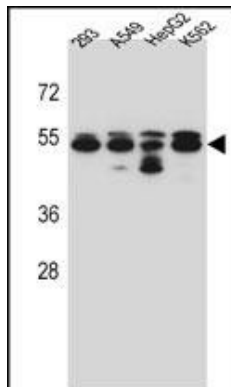
Tubulin is the major constituent of microtubules. It binds two moles of GTP, one at an exchangeable site on the beta chain and one at a non-exchangeable site on the alpha-chain (By similarity).

References

van Geel, M., et al. Am. J. Hum. Genet. 70(1):269-278(2002)

van Geel, M., et al. Cytogenet. Cell Genet. 88 (3-4), 316-321 (2000) :

Images



TUBB8 Antibody (N-term) (Cat. #AP13248a) western blot analysis in 293,A549,HepG2,K562 cell line lysates (35ug/lane).This demonstrates the TUBB8 antibody detected the TUBB8 protein (arrow).

Please note: All products are 'FOR RESEARCH USE ONLY. NOT FOR USE IN DIAGNOSTIC OR THERAPEUTIC PROCEDURES'.