

ATAD4 Antibody (C-term)

Affinity Purified Rabbit Polyclonal Antibody (Pab)

Catalog # AP13253b

Product Information

Application	WB, E
Primary Accession	Q9BU68
Other Accession	NP_077296.1
Reactivity	Human
Host	Rabbit
Clonality	Polyclonal
Isotype	Rabbit IgG
Clone Names	RB33134
Calculated MW	11705
Antigen Region	75-103

Additional Information

Gene ID	79170
Other Names	Proline-rich protein 15-like protein, Protein ATAD4, PRR15L, ATAD4
Target/Specificity	This ATAD4 antibody is generated from rabbits immunized with a KLH conjugated synthetic peptide between 75-103 amino acids from the C-terminal region of human ATAD4.
Dilution	WB~~1:1000 E~~Use at an assay dependent concentration.
Format	Purified polyclonal antibody supplied in PBS with 0.09% (W/V) sodium azide. This antibody is purified through a protein A column, followed by peptide affinity purification.
Storage	Maintain refrigerated at 2-8°C for up to 2 weeks. For long term storage store at -20°C in small aliquots to prevent freeze-thaw cycles.
Precautions	ATAD4 Antibody (C-term) is for research use only and not for use in diagnostic or therapeutic procedures.

Protein Information

Name	PRR15L
Synonyms	ATAD4

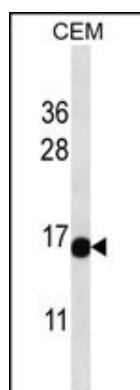
Background

The specific function of this protein remains unknown.

References

Lamesch, P., et al. Genomics 89(3):307-315(2007)

Images



ATAD4 Antibody (C-term) (Cat. #AP13253b) western blot analysis in CEM cell line lysates (35ug/lane). This demonstrates the ATAD4 antibody detected the ATAD4 protein (arrow).

Please note: All products are 'FOR RESEARCH USE ONLY. NOT FOR USE IN DIAGNOSTIC OR THERAPEUTIC PROCEDURES'.