

OR13F1 Antibody (C-term)

Affinity Purified Rabbit Polyclonal Antibody (Pab)

Catalog # AP13257b

Product Information

Application	WB, E
Primary Accession	Q8NGS4
Other Accession	NP_001004485.1
Reactivity	Human
Host	Rabbit
Clonality	Polyclonal
Isotype	Rabbit IgG
Clone Names	RB33161
Calculated MW	35646
Antigen Region	244-272

Additional Information

Gene ID	138805
Other Names	Olfactory receptor 13F1, Olfactory receptor OR9-6, OR13F1
Target/Specificity	This OR13F1 antibody is generated from rabbits immunized with a KLH conjugated synthetic peptide between 244-272 amino acids from the C-terminal region of human OR13F1.
Dilution	WB~~1:1000 E~~Use at an assay dependent concentration.
Format	Purified polyclonal antibody supplied in PBS with 0.09% (W/V) sodium azide. This antibody is purified through a protein A column, followed by peptide affinity purification.
Storage	Maintain refrigerated at 2-8°C for up to 2 weeks. For long term storage store at -20°C in small aliquots to prevent freeze-thaw cycles.
Precautions	OR13F1 Antibody (C-term) is for research use only and not for use in diagnostic or therapeutic procedures.

Protein Information

Name	OR13F1
Function	Odorant receptor.
Cellular Location	Cell membrane; Multi-pass membrane protein.

Background

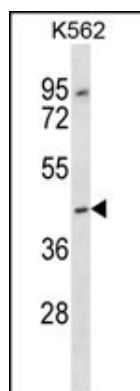
Olfactory receptors interact with odorant molecules in the nose, to initiate a neuronal response that triggers the perception of a smell. The olfactory receptor proteins are members of a large family of G-protein-coupled receptors (GPCR) arising from single coding-exon genes. Olfactory receptors share a 7-transmembrane domain structure with many neurotransmitter and hormone receptors and are responsible for the recognition and G protein-mediated transduction of odorant signals. The olfactory receptor gene family is the largest in the genome. The nomenclature assigned to the olfactory receptor genes and proteins for this organism is independent of other organisms.

References

Humphray, S.J., et al. Nature 429(6990):369-374(2004)

Malnic, B., et al. Proc. Natl. Acad. Sci. U.S.A. 101(8):2584-2589(2004)

Images



OR13F1 Antibody (C-term) (Cat. #AP13257b) western blot analysis in K562 cell line lysates (35ug/lane). This demonstrates the OR13F1 antibody detected the OR13F1 protein (arrow).

Please note: All products are 'FOR RESEARCH USE ONLY. NOT FOR USE IN DIAGNOSTIC OR THERAPEUTIC PROCEDURES'.