

# OR2A42 Antibody (C-term)

Affinity Purified Rabbit Polyclonal Antibody (Pab)

Catalog # AP13263b

## Product Information

---

<b>Application</b>	WB, E
<b>Primary Accession</b>	<a href="#">Q8NGT9</a>
<b>Other Accession</b>	<a href="#">NP_001001802.1</a> , <a href="#">NP_001005287.1</a>
<b>Reactivity</b>	Human
<b>Host</b>	Rabbit
<b>Clonality</b>	Polyclonal
<b>Isotype</b>	Rabbit IgG
<b>Clone Names</b>	RB33173
<b>Calculated MW</b>	34714
<b>Antigen Region</b>	282-310

## Additional Information

---

<b>Gene ID</b>	346528;402317
<b>Other Names</b>	Olfactory receptor 2A1/2A42, Olfactory receptor OR7-16, Olfactory receptor OR7-19, OR2A1
<b>Target/Specificity</b>	This OR2A42 antibody is generated from rabbits immunized with a KLH conjugated synthetic peptide between 282-310 amino acids from the C-terminal region of human OR2A42.
<b>Dilution</b>	WB~~1:1000 E~~Use at an assay dependent concentration.
<b>Format</b>	Purified polyclonal antibody supplied in PBS with 0.09% (W/V) sodium azide. This antibody is purified through a protein A column, followed by peptide affinity purification.
<b>Storage</b>	Maintain refrigerated at 2-8°C for up to 2 weeks. For long term storage store at -20°C in small aliquots to prevent freeze-thaw cycles.
<b>Precautions</b>	OR2A42 Antibody (C-term) is for research use only and not for use in diagnostic or therapeutic procedures.

## Protein Information

---

<b>Name</b>	OR2A1
<b>Function</b>	Odorant receptor.
<b>Cellular Location</b>	Cell membrane; Multi-pass membrane protein.

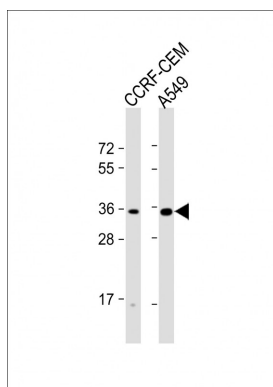
## Background

Olfactory receptors interact with odorant molecules in the nose, to initiate a neuronal response that triggers the perception of a smell. The olfactory receptor proteins are members of a large family of G-protein-coupled receptors (GPCR) arising from single coding-exon genes. Olfactory receptors share a 7-transmembrane domain structure with many neurotransmitter and hormone receptors and are responsible for the recognition and G protein-mediated transduction of odorant signals. The olfactory receptor gene family is the largest in the genome. The nomenclature assigned to the olfactory receptor genes and proteins for this organism is independent of other organisms.

## References

Malnic, B., et al. Proc. Natl. Acad. Sci. U.S.A. 101(8):2584-2589(2004)  
Fuchs, T., et al. Genomics 80(3):295-302(2002)

## Images



All lanes : Anti-OR2A42 Antibody (C-term) at 1:1000 dilution  
Lane 1: CCRF-CEM whole cell lysate  
Lane 2: A549 whole cell lysate  
Lysates/proteins at 20 µg per lane.  
Secondary Goat Anti-Rabbit IgG, (H+L), Peroxidase conjugated at 1/10000 dilution.  
Predicted band size : 35 kDa  
Blocking/Dilution buffer: 5% NFDM/TBST.

Please note: All products are 'FOR RESEARCH USE ONLY. NOT FOR USE IN DIAGNOSTIC OR THERAPEUTIC PROCEDURES'.