

OR4D6 Antibody (C-term)

Affinity Purified Rabbit Polyclonal Antibody (Pab)

Catalog # AP13272b

Product Information

Application	WB, E
Primary Accession	Q8NGJ1
Other Accession	NP_001004708.1
Reactivity	Human
Host	Rabbit
Clonality	Polyclonal
Isotype	Rabbit IgG
Clone Names	RB33199
Calculated MW	35954
Antigen Region	285-312

Additional Information

Gene ID	219983
Other Names	Olfactory receptor 4D6, Olfactory receptor OR11-250, OR4D6
Target/Specificity	This OR4D6 antibody is generated from rabbits immunized with a KLH conjugated synthetic peptide between 285-312 amino acids from the C-terminal region of human OR4D6.
Dilution	WB~~1:1000 E~~Use at an assay dependent concentration.
Format	Purified polyclonal antibody supplied in PBS with 0.09% (W/V) sodium azide. This antibody is purified through a protein A column, followed by peptide affinity purification.
Storage	Maintain refrigerated at 2-8°C for up to 2 weeks. For long term storage store at -20°C in small aliquots to prevent freeze-thaw cycles.
Precautions	OR4D6 Antibody (C-term) is for research use only and not for use in diagnostic or therapeutic procedures.

Protein Information

Name	OR4D6
Function	Odorant receptor.
Cellular Location	Cell membrane; Multi-pass membrane protein.

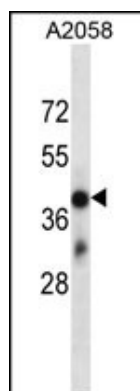
Background

Olfactory receptors interact with odorant molecules in the nose, to initiate a neuronal response that triggers the perception of a smell. The olfactory receptor proteins are members of a large family of G-protein-coupled receptors (GPCR) arising from single coding-exon genes. Olfactory receptors share a 7-transmembrane domain structure with many neurotransmitter and hormone receptors and are responsible for the recognition and G protein-mediated transduction of odorant signals. The olfactory receptor gene family is the largest in the genome. The nomenclature assigned to the olfactory receptor genes and proteins for this organism is independent of other organisms.

References

Malnic, B., et al. Proc. Natl. Acad. Sci. U.S.A. 101(8):2584-2589(2004)
Fuchs, T., et al. Genomics 80(3):295-302(2002)

Images



OR4D6 Antibody (C-term) (Cat. #AP13272b) western blot analysis in A2058 cell line lysates (35ug/lane). This demonstrates the OR4D6 antibody detected the OR4D6 protein (arrow).

Please note: All products are 'FOR RESEARCH USE ONLY. NOT FOR USE IN DIAGNOSTIC OR THERAPEUTIC PROCEDURES'.