

CXCR6 Antibody (N-term)

Affinity Purified Rabbit Polyclonal Antibody (Pab)

Catalog # AP13298a

Product Information

Application	WB, E
Primary Accession	O00574
Other Accession	NP_006555.1
Reactivity	Human
Host	Rabbit
Clonality	Polyclonal
Isotype	Rabbit IgG
Clone Names	RB33271
Calculated MW	39280
Antigen Region	3-31

Additional Information

Gene ID	10663
Other Names	C-X-C chemokine receptor type 6, CXC-R6, CXCR-6, CDw186, G-protein coupled receptor STRL33, G-protein coupled receptor bonzo, CD186, CXCR6, BONZO, STRL33, TYMSTR
Target/Specificity	This CXCR6 antibody is generated from rabbits immunized with a KLH conjugated synthetic peptide between 3-31 amino acids from the N-terminal region of human CXCR6.
Dilution	WB~~1:1000 E~~Use at an assay dependent concentration.
Format	Purified polyclonal antibody supplied in PBS with 0.09% (W/V) sodium azide. This antibody is purified through a protein A column, followed by peptide affinity purification.
Storage	Maintain refrigerated at 2-8°C for up to 2 weeks. For long term storage store at -20°C in small aliquots to prevent freeze-thaw cycles.
Precautions	CXCR6 Antibody (N-term) is for research use only and not for use in diagnostic or therapeutic procedures.

Protein Information

Name	CXCR6
Synonyms	BONZO, STRL33, TYMSTR

Function	Receptor for the C-X-C chemokine CXCL16. Used as a coreceptor by SIVs and by strains of HIV-2 and m-tropic HIV-1.
Cellular Location	Cell membrane; Multi-pass membrane protein.
Tissue Location	Expressed in lymphoid tissues and activated T cells

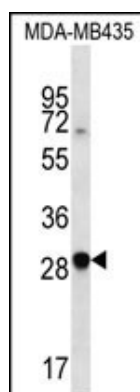
Background

Receptor for the C-X-C chemokine CXCL16. Used as a coreceptor by SIVs and by strains of HIV-2 and m-tropic HIV-1.

References

Limou, S., et al. J. Infect. Dis. 202(6):908-915(2010)
 Zhou, W.H., et al. Zhonghua Yi Xue Za Zhi 90(14):947-951(2010)
 Segat, L., et al. Vaccine 28(10):2201-2206(2010)
 Johnatty, S.E., et al. PLoS Genet. 6 (7), E1001016 (2010) :
 Darash-Yahana, M., et al. PLoS ONE 4 (8), E6695 (2009) :

Images



CXCR6 Antibody (N-term) (Cat. #AP13298a) western blot analysis in MDA-MB435 cell line lysates (35ug/lane). This demonstrates the CXCR6 antibody detected the CXCR6 protein (arrow).

Please note: All products are 'FOR RESEARCH USE ONLY. NOT FOR USE IN DIAGNOSTIC OR THERAPEUTIC PROCEDURES'.