

TASP1 Antibody (C-term)

Purified Rabbit Polyclonal Antibody (Pab)

Catalog # AP1330b

Product Information

Application	WB, IHC-P, E
Primary Accession	Q9H6P5
Other Accession	Q8R1G1
Reactivity	Human, Mouse
Host	Rabbit
Clonality	Polyclonal
Isotype	Rabbit IgG
Clone Names	RB10862
Calculated MW	44455
Antigen Region	364-395

Additional Information

Gene ID	55617
Other Names	Threonine aspartase 1, Taspase-1, 3425-, Threonine aspartase subunit alpha, Threonine aspartase subunit beta, TASP1, C20orf13
Target/Specificity	This TASP1 antibody is generated from rabbits immunized with a KLH conjugated synthetic peptide between 364-395 amino acids from the C-terminal region of human TASP1.
Dilution	WB~~1:1000 IHC-P~~1:100~500 E~~Use at an assay dependent concentration.
Format	Purified polyclonal antibody supplied in PBS with 0.09% (W/V) sodium azide. This antibody is prepared by Saturated Ammonium Sulfate (SAS) precipitation followed by dialysis against PBS.
Storage	Maintain refrigerated at 2-8°C for up to 2 weeks. For long term storage store at -20°C in small aliquots to prevent freeze-thaw cycles.
Precautions	TASP1 Antibody (C-term) is for research use only and not for use in diagnostic or therapeutic procedures.

Protein Information

Name	TASP1
Synonyms	C20orf13
Function	Protease responsible for KMT2A/MLL1 processing and activation

(PubMed:[14636557](#)). It also activates KMT2D/MLL2 (By similarity). Through substrate activation, it controls the expression of HOXA genes, and the expression of key cell cycle regulators including CCNA1, CCNB1, CCNE1 and CDKN2A (By similarity) (PubMed:[14636557](#)).

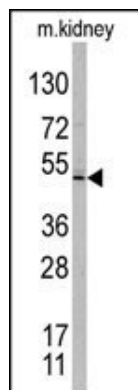
Background

TASP1 is an endopeptidase that cleaves specific substrates following aspartate residues. The encoded protein undergoes posttranslational autoproteolytic processing to generate alpha and beta subunits, which reassemble into the active alpha2-beta2 heterotetramer. It is required to cleave MLL, a protein required for the maintenance of HOX gene expression, and TFIIA, a basal transcription factor.

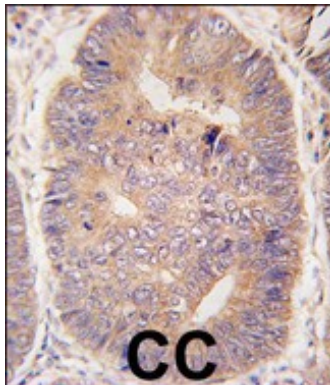
References

Hsieh, J.J., et al., Cell 115(3):293-303 (2003).

Images



Western blot analysis of TASP1 C-term polyclonal antibody (Cat.# AP1330b) in mouse kidney tissue lysates. TASP1 (arrow) was detected using the purified Pab .



Formalin-fixed and paraffin-embedded human colon carcinoma tissue reacted with hTASP1-C-term (Cat.#AP1330b), which was peroxidase-conjugated to the secondary antibody, followed by DAB staining. This data demonstrates the use of this antibody for immunohistochemistry; clinical relevance has not been evaluated.

Please note: All products are 'FOR RESEARCH USE ONLY. NOT FOR USE IN DIAGNOSTIC OR THERAPEUTIC PROCEDURES'.