

MEA1 Antibody (N-term)

Affinity Purified Rabbit Polyclonal Antibody (Pab)

Catalog # AP13315a

Product Information

Application	WB, E
Primary Accession	Q16626
Other Accession	NP_055438.1
Reactivity	Human
Host	Rabbit
Clonality	Polyclonal
Isotype	Rabbit IgG
Clone Names	RB33313
Calculated MW	19905
Antigen Region	19-48

Additional Information

Gene ID	4201
Other Names	Male-enhanced antigen 1, MEA-1, MEA1, MEA
Target/Specificity	This MEA1 antibody is generated from rabbits immunized with a KLH conjugated synthetic peptide between 19-48 amino acids from the N-terminal region of human MEA1.
Dilution	WB~~1:1000 E~~Use at an assay dependent concentration.
Format	Purified polyclonal antibody supplied in PBS with 0.09% (W/V) sodium azide. This antibody is purified through a protein A column, followed by peptide affinity purification.
Storage	Maintain refrigerated at 2-8°C for up to 2 weeks. For long term storage store at -20°C in small aliquots to prevent freeze-thaw cycles.
Precautions	MEA1 Antibody (N-term) is for research use only and not for use in diagnostic or therapeutic procedures.

Protein Information

Name	MEA1
Synonyms	MEA
Function	May play an important role in spermatogenesis and/or testis development.

Tissue Location

Highly expressed in testis.

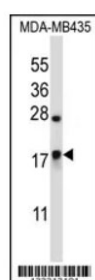
Background

MEA1 may play an important role in spermatogenesis and/or testis development.

References

Sugiyama, N., et al. Mol. Cell Proteomics 6(6):1103-1109(2007)
Mungall, A.J., et al. Nature 425(6960):805-811(2003)
Ohinata, Y., et al. Biol. Reprod. 67(6):1824-1831(2002)
Lau, Y.F., et al. Proc. Natl. Acad. Sci. U.S.A. 86(21):8462-8466(1989)

Images



MEA1 Antibody (N-term) (Cat. #AP13315a) western blot analysis in MDA-MB435 cell line lysates (35ug/lane). This demonstrates the MEA1 antibody detected the MEA1 protein (arrow).

Please note: All products are 'FOR RESEARCH USE ONLY. NOT FOR USE IN DIAGNOSTIC OR THERAPEUTIC PROCEDURES'.