

NLE1 Antibody (C-term)

Affinity Purified Rabbit Polyclonal Antibody (Pab)

Catalog # AP13317b

Product Information

Application	WB, E
Primary Accession	Q9NVX2
Other Accession	NP_060566.2 , NP_001014445.1
Reactivity	Human
Host	Rabbit
Clonality	Polyclonal
Isotype	Rabbit IgG
Clone Names	RB33320
Calculated MW	53320
Antigen Region	343-372

Additional Information

Gene ID	54475
Other Names	Notchless protein homolog 1, NLE1
Target/Specificity	This NLE1 antibody is generated from rabbits immunized with a KLH conjugated synthetic peptide between 343-372 amino acids from the C-terminal region of human NLE1.
Dilution	WB~~1:1000 E~~Use at an assay dependent concentration.
Format	Purified polyclonal antibody supplied in PBS with 0.09% (W/V) sodium azide. This antibody is purified through a protein A column, followed by peptide affinity purification.
Storage	Maintain refrigerated at 2-8°C for up to 2 weeks. For long term storage store at -20°C in small aliquots to prevent freeze-thaw cycles.
Precautions	NLE1 Antibody (C-term) is for research use only and not for use in diagnostic or therapeutic procedures.

Protein Information

Name	NLE1
Function	Plays a role in regulating Notch activity. Plays a role in regulating the expression of CDKN1A and several members of the Wnt pathway, probably via its effects on Notch activity. Required during embryogenesis for inner mass cell survival (By similarity).

Background

NLE1 (Notchless protein homolog 1) contains 8 WD repeats and may be involved in the Notch signaling pathway.

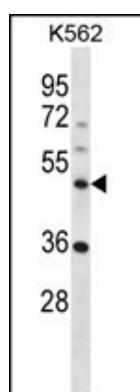
References

Matsuoka, S., et al. Science 316(5828):1160-1166(2007)

Scherl, A., et al. Mol. Biol. Cell 13(11):4100-4109(2002)

Stanchi, F., et al. Yeast 18(1):69-80(2001)

Images



NLE1 Antibody (C-term) (Cat. #AP13317b) western blot analysis in K562 cell line lysates (35ug/lane). This demonstrates the NLE1 antibody detected the NLE1 protein (arrow).

Please note: All products are 'FOR RESEARCH USE ONLY. NOT FOR USE IN DIAGNOSTIC OR THERAPEUTIC PROCEDURES'.