

KCTD3 Antibody (C-term)

Affinity Purified Rabbit Polyclonal Antibody (Pab)

Catalog # AP13318b

Product Information

Application	WB, IHC-P, E
Primary Accession	Q9Y597
Other Accession	NP_057205.2
Reactivity	Human
Host	Rabbit
Clonality	Polyclonal
Isotype	Rabbit IgG
Clone Names	RB33321
Calculated MW	88984
Antigen Region	725-754

Additional Information

Gene ID	51133
Other Names	BTB/POZ domain-containing protein KCTD3, Renal carcinoma antigen NY-REN-45, KCTD3
Target/Specificity	This KCTD3 antibody is generated from rabbits immunized with a KLH conjugated synthetic peptide between 725-754 amino acids from the C-terminal region of human KCTD3.
Dilution	WB~~1:1000 IHC-P~~1:100~500 E~~Use at an assay dependent concentration.
Format	Purified polyclonal antibody supplied in PBS with 0.09% (W/V) sodium azide. This antibody is purified through a protein A column, followed by peptide affinity purification.
Storage	Maintain refrigerated at 2-8°C for up to 2 weeks. For long term storage store at -20°C in small aliquots to prevent freeze-thaw cycles.
Precautions	KCTD3 Antibody (C-term) is for research use only and not for use in diagnostic or therapeutic procedures.

Protein Information

Name	KCTD3
Function	Accessory subunit of potassium/sodium hyperpolarization- activated cyclic nucleotide-gated channel 3 (HCN3) up-regulating its cell-surface expression and current density without affecting its voltage dependence and kinetics.

Cellular Location

Cell membrane {ECO:0000250|UniProtKB:Q8BFX3}.

Tissue Location

Broadly expressed in normal tissues.

Background

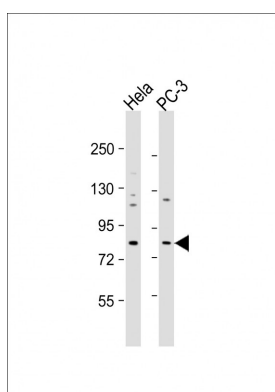
KCTD3 belongs to the KCTD3 family. It contains one BTB (POZ) domain and five WD repeats. The exact function of KCTD3 is not known. There are three named isoforms.

References

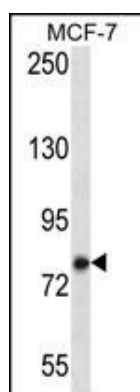
Lehner, B., et al. Genome Res. 14(7):1315-1323(2004)

Scanlan, M.J., et al. Int. J. Cancer 83(4):456-464(1999)

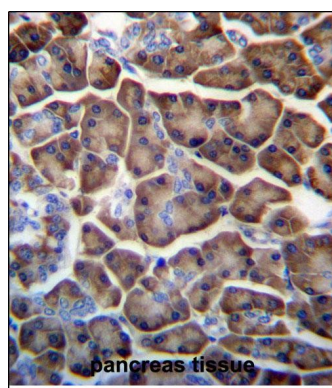
Images



All lanes : Anti-KCTD3 Antibody (C-term) at 1:1000 dilution
Lane 1: HeLa whole cell lysate Lane 2: PC-3 whole cell lysate
Lysates/proteins at 20 µg per lane. Secondary Goat Anti-Rabbit IgG, (H+L), Peroxidase conjugated at 1/10000 dilution. Predicted band size : 89 kDa Blocking/Dilution buffer: 5% NFDM/TBST.



KCTD3 Antibody (C-term) (Cat. #AP13318b) western blot analysis in MCF-7 cell line lysates (35ug/lane). This demonstrates the KCTD3 antibody detected the KCTD3 protein (arrow).



KCTD3 Antibody (C-term) (Cat. #AP13318b) immunohistochemistry analysis in formalin fixed and paraffin embedded human pancreas tissue followed by peroxidase conjugation of the secondary antibody and DAB staining. This data demonstrates the use of KCTD3 Antibody (C-term) for immunohistochemistry. Clinical relevance has not been evaluated.