

C7orf36 Antibody (Center)

Affinity Purified Rabbit Polyclonal Antibody (Pab)

Catalog # AP13327c

Product Information

Application	WB, IHC-P, E
Primary Accession	Q9NRH1
Other Accession	NP_064577.1
Reactivity	Human
Host	Rabbit
Clonality	Polyclonal
Isotype	Rabbit IgG
Clone Names	RB33358
Calculated MW	25299
Antigen Region	131-160

Additional Information

Gene ID	57002
Other Names	Yae1 domain-containing protein 1, YAE1D1, C7orf36
Target/Specificity	This C7orf36 antibody is generated from rabbits immunized with a KLH conjugated synthetic peptide between 131-160 amino acids from the Central region of human C7orf36.
Dilution	WB~~1:1000 IHC-P~~1:100~500 E~~Use at an assay dependent concentration.
Format	Purified polyclonal antibody supplied in PBS with 0.09% (W/V) sodium azide. This antibody is purified through a protein A column, followed by peptide affinity purification.
Storage	Maintain refrigerated at 2-8°C for up to 2 weeks. For long term storage store at -20°C in small aliquots to prevent freeze-thaw cycles.
Precautions	C7orf36 Antibody (Center) is for research use only and not for use in diagnostic or therapeutic procedures.

Protein Information

Name	YAE1 (HGNC:24857)
Function	The complex LTO1:YAE1 functions as a target specific adapter that probably recruits apo-ABCE1 to the cytosolic iron-sulfur protein assembly (CIA) complex machinery (PubMed: 26182403). May be required for biogenesis of the large ribosomal subunit and initiation of translation (PubMed: 26182403).

Cellular Location

Cytoplasm {ECO:0000250|UniProtKB:P47118}. Nucleus {ECO:0000250|UniProtKB:P47118}

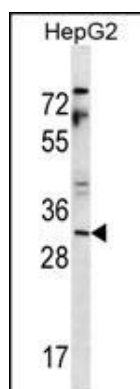
Background

The specific function of this protein remains unknown.

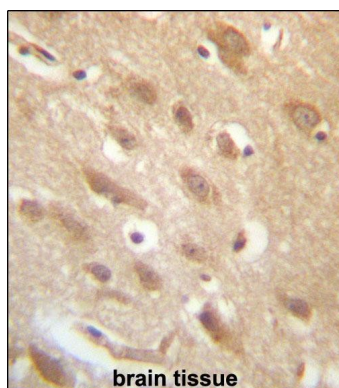
References

Stelzl, U., et al. Cell 122(6):957-968(2005)

Images



C7orf36 Antibody (Center) (Cat. #AP13327c) western blot analysis in HepG2 cell line lysates (35ug/lane). This demonstrates the C7orf36 antibody detected the C7orf36 protein (arrow).



C7orf36 Antibody (Center) (Cat. #AP13327c) immunohistochemistry analysis in formalin fixed and paraffin embedded human brain tissue followed by peroxidase conjugation of the secondary antibody and DAB staining. This data demonstrates the use of C7orf36 Antibody (Center) for immunohistochemistry. Clinical relevance has not been evaluated.

Please note: All products are 'FOR RESEARCH USE ONLY. NOT FOR USE IN DIAGNOSTIC OR THERAPEUTIC PROCEDURES'.