

PI15 Antibody (N-term)

Affinity Purified Rabbit Polyclonal Antibody (Pab)

Catalog # AP13330a

Product Information

Application	WB, IHC-P, FC, E
Primary Accession	O43692
Other Accession	NP_056970.1
Reactivity	Human
Host	Rabbit
Clonality	Polyclonal
Isotype	Rabbit IgG
Clone Names	RB33380
Calculated MW	29065
Antigen Region	34-63

Additional Information

Gene ID	51050
Other Names	Peptidase inhibitor 15, PI-15, 25 kDa trypsin inhibitor, p25TI, Cysteine-rich secretory protein 8, CRISP-8, SugarCrisp, PI15, CRISP8, P25TI
Target/Specificity	This PI15 antibody is generated from rabbits immunized with a KLH conjugated synthetic peptide between 34-63 amino acids from the N-terminal region of human PI15.
Dilution	WB~~1:1000 IHC-P~~1:100~500 FC~~1:10~50 E~~Use at an assay dependent concentration.
Format	Purified polyclonal antibody supplied in PBS with 0.09% (W/V) sodium azide. This antibody is purified through a protein A column, followed by peptide affinity purification.
Storage	Maintain refrigerated at 2-8°C for up to 2 weeks. For long term storage store at -20°C in small aliquots to prevent freeze-thaw cycles.
Precautions	PI15 Antibody (N-term) is for research use only and not for use in diagnostic or therapeutic procedures.

Protein Information

Name	PI15
Synonyms	CRISP8, P25TI

Function	Serine protease inhibitor which displays weak inhibitory activity against trypsin (PubMed: 8882727). May play a role in facial patterning during embryonic development (By similarity).
Cellular Location	Secreted.
Tissue Location	Weakly expressed. Expressed at low level in prostate, mammary gland, salivary gland and thyroid gland

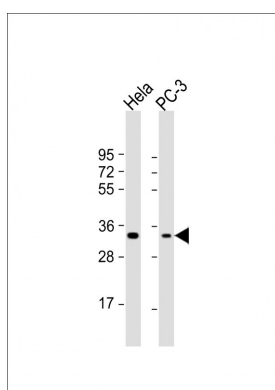
Background

This gene encodes a trypsin inhibitor. The protein shares similarity to insect venom allergens, mammalian testis-specific proteins and plant pathogenesis-related proteins. It is frequently expressed in human neuroblastoma and glioblastoma cell lines, and thus may play a role in the central nervous system. [provided by RefSeq].

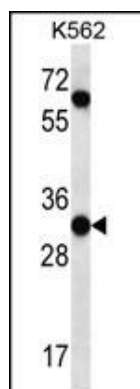
References

Melzer, D., et al. PLoS Genet. 4 (5), E1000072 (2008) :
Kaplan, F., et al. Am. J. Physiol. 276 (6 PT 1), L1027-L1036 (1999) :
Yamakawa, T., et al. Biochim. Biophys. Acta 1395(2):202-208(1998)
Yamakawa, T., et al. Biochim. Biophys. Acta 1395(2):202-208(1998)
Koshikawa, N., et al. J. Biochem. 119(2):334-339(1996)

Images

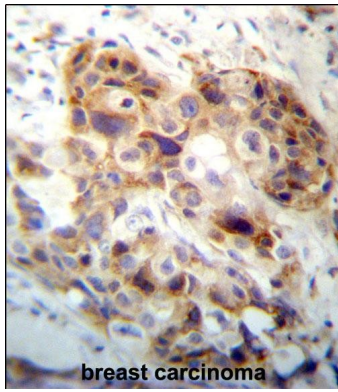


All lanes : Anti-PI15 Antibody (N-term) at 1:1000 dilution
Lane 1: HeLa whole cell lysate Lane 2: PC-3 whole cell lysate
Lysates/proteins at 20 µg per lane. Secondary Goat Anti-Rabbit IgG, (H+L), Peroxidase conjugated at 1/10000 dilution. Predicted band size : 29 kDa
Blocking/Dilution buffer: 5% NFDM/TBST.

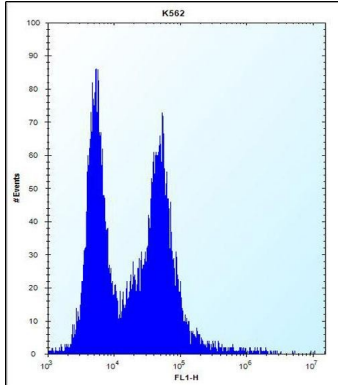


PI15 Antibody (N-term) (Cat. #AP13330a) western blot analysis in K562 cell line lysates (35ug/lane). This demonstrates the PI15 antibody detected the PI15 protein (arrow).

PI15 Antibody (N-term) (Cat. #AP13330a) immunohistochemistry analysis in formalin fixed and paraffin embedded human breast carcinoma followed by peroxidase conjugation of the secondary antibody and DAB staining. This data demonstrates the



use of PI15 Antibody (N-term) for immunohistochemistry. Clinical relevance has not been evaluated.



PI15 Antibody (N-term) (Cat. #AP13330a) flow cytometric analysis of K562 cells (right histogram) compared to a negative control cell (left histogram). FITC-conjugated donkey-anti-rabbit secondary antibodies were used for the analysis.

Please note: All products are 'FOR RESEARCH USE ONLY. NOT FOR USE IN DIAGNOSTIC OR THERAPEUTIC PROCEDURES'.