

OR7G2 Antibody (C-term)

Affinity Purified Rabbit Polyclonal Antibody (Pab)
Catalog # AP13334b

Product Information

Application	WB, E
Primary Accession	Q8NG99
Reactivity	Human
Host	Rabbit
Clonality	Polyclonal
Isotype	Rabbit IgG
Clone Names	RB33428
Antigen Region	278-307

Additional Information

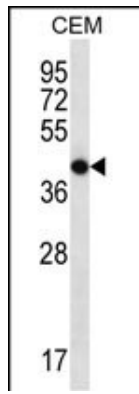
Other Names	Olfactory receptor 7G2, OST260, Olfactory receptor 19-13, OR19-13, Olfactory receptor OR19-6, OR7G2
Target/Specificity	This OR7G2 antibody is generated from rabbits immunized with a KLH conjugated synthetic peptide between 278-307 amino acids from the C-terminal region of human OR7G2.
Dilution	WB~~1:1000 E~~Use at an assay dependent concentration.
Format	Purified polyclonal antibody supplied in PBS with 0.09% (W/V) sodium azide. This antibody is purified through a protein A column, followed by peptide affinity purification.
Storage	Maintain refrigerated at 2-8°C for up to 2 weeks. For long term storage store at -20°C in small aliquots to prevent freeze-thaw cycles.
Precautions	OR7G2 Antibody (C-term) is for research use only and not for use in diagnostic or therapeutic procedures.

Protein Information

Background

OR7G2 is an odorant receptor (Potential).

Images



analysis in CEM cell line lysates (35ug/lane). This demonstrates the OR7G2 antibody detected the OR7G2 protein (arrow).

Please note: All products are 'FOR RESEARCH USE ONLY. NOT FOR USE IN DIAGNOSTIC OR THERAPEUTIC PROCEDURES'.