

ARL6IP6 Antibody (N-term)

Affinity Purified Rabbit Polyclonal Antibody (Pab)

Catalog # AP13337a

Product Information

Application	WB, E
Primary Accession	Q8N6S5
Other Accession	NP_689735.1
Reactivity	Human
Host	Rabbit
Clonality	Polyclonal
Isotype	Rabbit IgG
Clone Names	RB33452
Calculated MW	24676
Antigen Region	19-47

Additional Information

Gene ID	151188
Other Names	ADP-ribosylation factor-like protein 6-interacting protein 6, ARL-6-interacting protein 6, Aip-6, Phosphonoformate immuno-associated protein 1, ARL6IP6, PFAAP1
Target/Specificity	This ARL6IP6 antibody is generated from rabbits immunized with a KLH conjugated synthetic peptide between 19-47 amino acids from the N-terminal region of human ARL6IP6.
Dilution	WB~~1:1000 E~~Use at an assay dependent concentration.
Format	Purified polyclonal antibody supplied in PBS with 0.09% (W/V) sodium azide. This antibody is purified through a protein A column, followed by peptide affinity purification.
Storage	Maintain refrigerated at 2-8°C for up to 2 weeks. For long term storage store at -20°C in small aliquots to prevent freeze-thaw cycles.
Precautions	ARL6IP6 Antibody (N-term) is for research use only and not for use in diagnostic or therapeutic procedures.

Protein Information

Name	ARL6IP6
Synonyms	PFAAP1

Cellular Location

Nucleus inner membrane {ECO:0000250|UniProtKB:Q8BH07}; Multi-pass membrane protein

Background

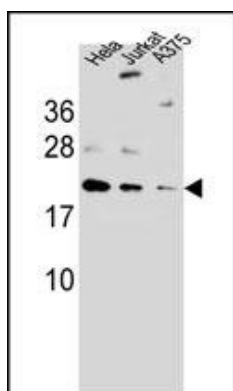
The specific function of this protein remains unknown.

References

Lamesch, P., et al. Genomics 89(3):307-315(2007)

Ingley, E., et al. FEBS Lett. 459(1):69-74(1999)

Images



ARL6IP6Antibody(N-term) (Cat. #AP13337a) western blot analysis in A375,HeLa,Jurkat cell line lysates (35ug/lane).This demonstrates the ARL6IP6 antibody detected the ARL6IP6 protein (arrow).

Please note: All products are 'FOR RESEARCH USE ONLY. NOT FOR USE IN DIAGNOSTIC OR THERAPEUTIC PROCEDURES'.