

PRRG1 Antibody (N-term)

Affinity Purified Rabbit Polyclonal Antibody (Pab)

Catalog # AP13343a

Product Information

Application	WB, E
Primary Accession	O14668
Other Accession	A7Z070 , NP_001166960.1 , NP_000941.1 , NP_001135867.1 , NP_001166957.1 , NP_001166961.1
Reactivity	Human
Predicted	Bovine
Host	Rabbit
Clonality	Polyclonal
Isotype	Rabbit IgG
Clone Names	RB33471
Calculated MW	24947
Antigen Region	30-59

Additional Information

Gene ID	5638
Other Names	Transmembrane gamma-carboxyglutamic acid protein 1, Proline-rich gamma-carboxyglutamic acid protein 1, Proline-rich Gla protein 1, PRRG1, PRGP1, TMG1
Target/Specificity	This PRRG1 antibody is generated from rabbits immunized with a KLH conjugated synthetic peptide between 30-59 amino acids from the N-terminal region of human PRRG1.
Dilution	WB~~1:1000 E~~Use at an assay dependent concentration.
Format	Purified polyclonal antibody supplied in PBS with 0.09% (W/V) sodium azide. This antibody is purified through a protein A column, followed by peptide affinity purification.
Storage	Maintain refrigerated at 2-8°C for up to 2 weeks. For long term storage store at -20°C in small aliquots to prevent freeze-thaw cycles.
Precautions	PRRG1 Antibody (N-term) is for research use only and not for use in diagnostic or therapeutic procedures.

Protein Information

Name	PRRG1
-------------	-------

Synonyms	PRGP1, TMG1
Cellular Location	Membrane; Single-pass type I membrane protein
Tissue Location	Highly expressed in the spinal cord.

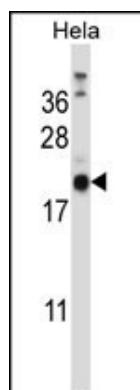
Background

This gene encodes a vitamin K-dependent, gamma-carboxyglutamic acid (Gla)-containing, single-pass transmembrane protein. This protein contains a Gla domain at the N-terminus, preceded by a propeptide sequence required for post-translational gamma-carboxylation of specific glutamic acid residues by a vitamin K-dependent gamma-carboxylase. The C-terminus is proline-rich containing PPXY and PXXP motifs found in a variety of signaling and cytoskeletal proteins. This gene is highly expressed in the spinal cord. Several alternatively spliced transcript variants have been found for this gene. [provided by RefSeq].

References

Lamesch, P., et al. Genomics 89(3):307-315(2007)
Wang, A.G., et al. Biochem. Biophys. Res. Commun. 345(3):1022-1032(2006)
Ross, M.T., et al. Nature 434(7031):325-337(2005)
Kulman, J.D., et al. Proc. Natl. Acad. Sci. U.S.A. 94(17):9058-9062(1997)

Images



PRRG1 Antibody (N-term) (Cat. #AP13343a) western blot analysis in HeLa cell line lysates (35ug/lane). This demonstrates the PRRG1 antibody detected the PRRG1 protein (arrow).

Please note: All products are 'FOR RESEARCH USE ONLY. NOT FOR USE IN DIAGNOSTIC OR THERAPEUTIC PROCEDURES'.