

# ZDHHC20 Antibody (N-term)

Affinity Purified Rabbit Polyclonal Antibody (Pab)

Catalog # AP13355a

## Product Information

---

<b>Application</b>	WB, IHC-P, E
<b>Primary Accession</b>	<a href="#">Q5W0Z9</a>
<b>Reactivity</b>	Human
<b>Host</b>	Rabbit
<b>Clonality</b>	Polyclonal
<b>Isotype</b>	Rabbit IgG
<b>Clone Names</b>	RB33548
<b>Calculated MW</b>	42278
<b>Antigen Region</b>	26-54

## Additional Information

---

<b>Gene ID</b>	253832
<b>Other Names</b>	Probable palmitoyltransferase ZDHHC20, Zinc finger DHHC domain-containing protein 20, DHHC-20, ZDHHC20
<b>Target/Specificity</b>	This ZDHHC20 antibody is generated from rabbits immunized with a KLH conjugated synthetic peptide between 26-54 amino acids from the N-terminal region of human ZDHHC20.
<b>Dilution</b>	WB~~1:1000 IHC-P~~1:100~500 E~~Use at an assay dependent concentration.
<b>Format</b>	Purified polyclonal antibody supplied in PBS with 0.09% (W/V) sodium azide. This antibody is purified through a protein A column, followed by peptide affinity purification.
<b>Storage</b>	Maintain refrigerated at 2-8°C for up to 2 weeks. For long term storage store at -20°C in small aliquots to prevent freeze-thaw cycles.
<b>Precautions</b>	ZDHHC20 Antibody (N-term) is for research use only and not for use in diagnostic or therapeutic procedures.

## Protein Information

---

<b>Name</b>	ZDHHC20 ( <a href="#">HGNC:20749</a> )
<b>Function</b>	Palmitoyltransferase that could catalyze the addition of palmitate onto various protein substrates (PubMed: <a href="#">27153536</a> , PubMed: <a href="#">29326245</a> , PubMed: <a href="#">33219126</a> ). Catalyzes palmitoylation of Cys residues in the cytoplasmic C-terminus of EGFR, and modulates the duration of EGFR

signaling by modulating palmitoylation-dependent EGFR internalization and degradation (PubMed:[27153536](#)). Has a preference for acyl-CoA with C16 fatty acid chains (PubMed:[29326245](#)). Can also utilize acyl-CoA with C14 and C18 fatty acid chains (PubMed:[29326245](#)). May palmitoylate CALHM1 subunit of gustatory voltage-gated ion channels and modulate channel gating and kinetics.

#### Cellular Location

Golgi apparatus membrane; Multi-pass membrane protein. Cell membrane; Multi-pass membrane protein. Cytoplasm, perinuclear region. Endoplasmic reticulum membrane; Multi-pass membrane protein. Endoplasmic reticulum-Golgi intermediate compartment membrane; Multi-pass membrane protein

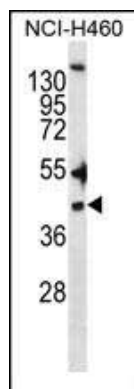
## Background

---

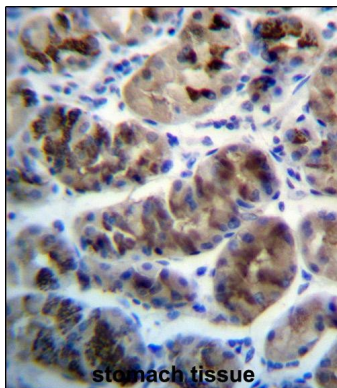
The specific function of this protein remains unknown.

## Images

---



ZDHC20 Antibody (N-term) (Cat. #AP13355a) western blot analysis in NCI-H460 cell line lysates (35ug/lane). This demonstrates the ZDHC20 antibody detected the ZDHC20 protein (arrow).



ZDHC20 Antibody (N-term) (Cat. #AP13355a) immunohistochemistry analysis in formalin fixed and paraffin embedded human stomach tissue followed by peroxidase conjugation of the secondary antibody and DAB staining. This data demonstrates the use of ZDHC20 Antibody (N-term) for immunohistochemistry. Clinical relevance has not been evaluated.

Please note: All products are 'FOR RESEARCH USE ONLY. NOT FOR USE IN DIAGNOSTIC OR THERAPEUTIC PROCEDURES'.