

WSCD2 Antibody (C-term)

Affinity Purified Rabbit Polyclonal Antibody (Pab)

Catalog # AP13359b

Product Information

Application	WB, E
Primary Accession	Q2TBF2
Other Accession	NP_055468.2
Reactivity	Human
Host	Rabbit
Clonality	Polyclonal
Isotype	Rabbit IgG
Clone Names	RB33560
Calculated MW	63817
Antigen Region	536-565

Additional Information

Gene ID	9671
Other Names	WSC domain-containing protein 2, WSCD2, KIAA0789
Target/Specificity	This WSCD2 antibody is generated from rabbits immunized with a KLH conjugated synthetic peptide between 536-565 amino acids from the C-terminal region of human WSCD2.
Dilution	WB~~1:1000 E~~Use at an assay dependent concentration.
Format	Purified polyclonal antibody supplied in PBS with 0.09% (W/V) sodium azide. This antibody is purified through a protein A column, followed by peptide affinity purification.
Storage	Maintain refrigerated at 2-8°C for up to 2 weeks. For long term storage store at -20°C in small aliquots to prevent freeze-thaw cycles.
Precautions	WSCD2 Antibody (C-term) is for research use only and not for use in diagnostic or therapeutic procedures.

Protein Information

Name	WSCD2
Synonyms	KIAA0789
Function	Sialate:O-sulfotransferase which catalyzes 8-O-sulfation at the Sia-glycan level using 3'-phosphoadenosine 5'-phosphosulfate (PAPS) as a donor,

forming 8-O-sulfated Sia (Sia8S)-glycans. Displays selectivity toward glycoproteins such as TF/transferrin.

Cellular Location

Golgi apparatus membrane {ECO:0000250 | UniProtKB:D4PHA7}; Single-pass type II membrane protein {ECO:0000250 | UniProtKB:D4PHA7}

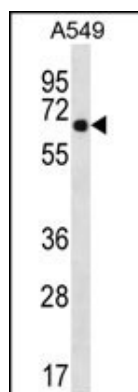
Background

The specific function of this protein remains unknown.

References

Kato, N., et al. Hum. Mol. Genet. 17(4):617-627(2008)

Images



WSCD2 Antibody (C-term) (Cat. #AP13359b) western blot analysis in A549 cell line lysates (35ug/lane). This demonstrates the WSCD2 antibody detected the WSCD2 protein (arrow).

Please note: All products are 'FOR RESEARCH USE ONLY. NOT FOR USE IN DIAGNOSTIC OR THERAPEUTIC PROCEDURES'.