

MORN1 Antibody (N-term)

Affinity Purified Rabbit Polyclonal Antibody (Pab)

Catalog # AP13360a

Product Information

Application	WB, IHC-P, E
Primary Accession	Q5T089
Other Accession	NP_079124.1
Reactivity	Human
Host	Rabbit
Clonality	Polyclonal
Isotype	Rabbit IgG
Clone Names	RB33562
Calculated MW	53850
Antigen Region	29-58

Additional Information

Gene ID	79906
Other Names	MORN repeat-containing protein 1, MORN1
Target/Specificity	This MORN1 antibody is generated from rabbits immunized with a KLH conjugated synthetic peptide between 29-58 amino acids from the N-terminal region of human MORN1.
Dilution	WB~~1:1000 IHC-P~~1:100~500 E~~Use at an assay dependent concentration.
Format	Purified polyclonal antibody supplied in PBS with 0.09% (W/V) sodium azide. This antibody is purified through a protein A column, followed by peptide affinity purification.
Storage	Maintain refrigerated at 2-8°C for up to 2 weeks. For long term storage store at -20°C in small aliquots to prevent freeze-thaw cycles.
Precautions	MORN1 Antibody (N-term) is for research use only and not for use in diagnostic or therapeutic procedures.

Protein Information

Name	MORN1
------	-------

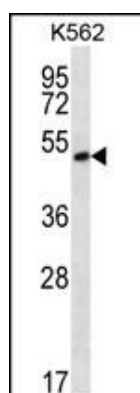
Background

The specific function of this protein remains unknown.

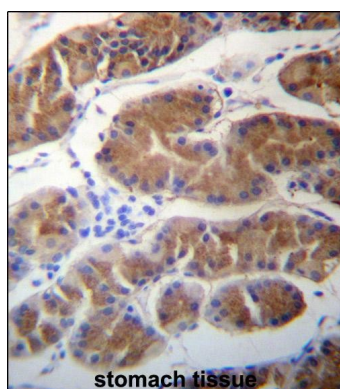
References

Gregory, S.G., et al. Nature 441(7091):315-321(2006)

Images



MORN1 Antibody (N-term) (Cat. #AP13360a) western blot analysis in K562 cell line lysates (35ug/lane). This demonstrates the MORN1 antibody detected the MORN1 protein (arrow).



MORN1 Antibody (N-term) (Cat. #AP13360a) immunohistochemistry analysis in formalin fixed and paraffin embedded human stomach tissue followed by peroxidase conjugation of the secondary antibody and DAB staining. This data demonstrates the use of MORN1 Antibody (N-term) for immunohistochemistry. Clinical relevance has not been evaluated.

Please note: All products are 'FOR RESEARCH USE ONLY. NOT FOR USE IN DIAGNOSTIC OR THERAPEUTIC PROCEDURES'.