

# WDR25 Antibody (C-term)

Affinity Purified Rabbit Polyclonal Antibody (Pab)

Catalog # AP13361b

## Product Information

---

<b>Application</b>	WB, IHC-P, E
<b>Primary Accession</b>	<a href="#">Q64LD2</a>
<b>Other Accession</b>	<a href="#">E9Q349</a> , <a href="#">NP_001154948.1</a>
<b>Reactivity</b>	Human
<b>Predicted</b>	Mouse
<b>Host</b>	Rabbit
<b>Clonality</b>	Polyclonal
<b>Isotype</b>	Rabbit IgG
<b>Clone Names</b>	RB33564
<b>Calculated MW</b>	60161
<b>Antigen Region</b>	444-473

## Additional Information

---

<b>Gene ID</b>	79446
<b>Other Names</b>	WD repeat-containing protein 25, WDR25
<b>Target/Specificity</b>	This WDR25 antibody is generated from rabbits immunized with a KLH conjugated synthetic peptide between 444-473 amino acids from the C-terminal region of human WDR25.
<b>Dilution</b>	WB~~1:1000 IHC-P~~1:100~500 E~~Use at an assay dependent concentration.
<b>Format</b>	Purified polyclonal antibody supplied in PBS with 0.09% (W/V) sodium azide. This antibody is purified through a protein A column, followed by peptide affinity purification.
<b>Storage</b>	Maintain refrigerated at 2-8°C for up to 2 weeks. For long term storage store at -20°C in small aliquots to prevent freeze-thaw cycles.
<b>Precautions</b>	WDR25 Antibody (C-term) is for research use only and not for use in diagnostic or therapeutic procedures.

## Protein Information

---

<b>Name</b>	WDR25 ( <a href="#">HGNC:21064</a> )
<b>Tissue Location</b>	Expressed in heart, muscle, testis, ovary, uterus and prostate.

## Background

---

The specific function of this protein remains unknown.

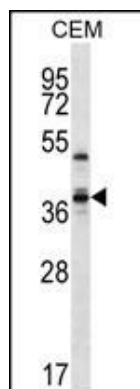
## References

---

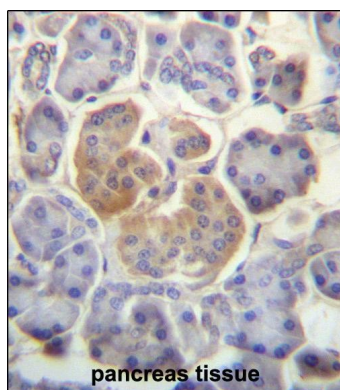
Jin, F., et al. Biochem. Genet. 42 (11-12), 419-427 (2004) :

## Images

---



WDR25 Antibody (C-term) (Cat. #AP13361b) western blot analysis in CEM cell line lysates (35ug/lane). This demonstrates the WDR25 antibody detected the WDR25 protein (arrow).



WDR25 Antibody (C-term) (Cat. #AP13361b) immunohistochemistry analysis in formalin fixed and paraffin embedded human pancreas tissue followed by peroxidase conjugation of the secondary antibody and DAB staining. This data demonstrates the use of WDR25 Antibody (C-term) for immunohistochemistry. Clinical relevance has not been evaluated.

Please note: All products are 'FOR RESEARCH USE ONLY. NOT FOR USE IN DIAGNOSTIC OR THERAPEUTIC PROCEDURES'.