

CCDC120 Antibody (N-term)

Affinity Purified Rabbit Polyclonal Antibody (Pab)

Catalog # AP13363a

Product Information

Application	WB, E
Primary Accession	Q96HB5
Other Accession	NP_001156793.1 , NP_001156794.1 , NP_296375.1 , NP_001156795.1
Reactivity	Human
Host	Rabbit
Clonality	Polyclonal
Isotype	Rabbit IgG
Clone Names	RB33566
Calculated MW	67567
Antigen Region	59-88

Additional Information

Gene ID	90060
Other Names	Coiled-coil domain-containing protein 120, CCDC120
Target/Specificity	This CCDC120 antibody is generated from rabbits immunized with a KLH conjugated synthetic peptide between 59-88 amino acids from the N-terminal region of human CCDC120.
Dilution	WB~~1:1000 E~~Use at an assay dependent concentration.
Format	Purified polyclonal antibody supplied in PBS with 0.09% (W/V) sodium azide. This antibody is purified through a protein A column, followed by peptide affinity purification.
Storage	Maintain refrigerated at 2-8°C for up to 2 weeks. For long term storage store at -20°C in small aliquots to prevent freeze-thaw cycles.
Precautions	CCDC120 Antibody (N-term) is for research use only and not for use in diagnostic or therapeutic procedures.

Protein Information

Name	CCDC120
Function	Centriolar protein required for centriole subdistal appendage assembly and microtubule anchoring in interphase cells (PubMed: 28422092). Together with CCDC68, cooperate with subdistal appendage components ODF2, NIN and CEP170 for hierarchical subdistal appendage assembly (PubMed: 28422092).

Recruits NIN and CEP170 to centrosomes (PubMed:[28422092](#)). Also required for neurite growth. Localizes CYTH2 to vesicles to allow its transport along neurites, and subsequent ARF6 activation and neurite growth.

Cellular Location

Cytoplasm, cytoskeleton, microtubule organizing center, centrosome, centriole. Cytoplasm. Cell projection, neuron projection. Cell projection, growth cone. Endosome Note=Localizes to the subdistal appendages of mother centrioles and proximal ends of both centrioles in interphase cells (PubMed:28422092) Recruited to subdistal appendages by ODF2 (PubMed:28422092). In differentiating neuroblastoma cells, colocalizes with CYTH2 in both neurite shaft and growth cone areas (PubMed:25326380). Partially colocalizes with endosomes along neurites in differentiating neuroblastoma cells (PubMed:25326380).

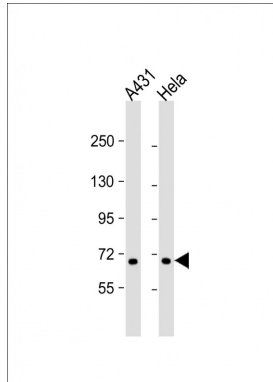
Background

This gene encodes a protein that contains a coiled-coil domain. Four alternatively spliced transcript variants that encode different protein isoforms have been described for this gene.

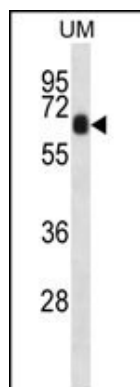
References

Xin, X., et al. Genome Res. 19(7):1262-1269(2009)
Tarpey, P.S., et al. Nat. Genet. 41(5):535-543(2009)
Matsuoka, S., et al. Science 316(5828):1160-1166(2007)

Images



All lanes : Anti-CCDC120 Antibody (N-term) at 1:1000 dilution
Lane 1: A431 whole cell lysate
Lane 2: HeLa whole cell lysate
Lysates/proteins at 20 µg per lane. Secondary Goat Anti-Rabbit IgG, (H+L), Peroxidase conjugated at 1/10000 dilution. Predicted band size : 68 kDa
Blocking/Dilution buffer: 5% NFDM/TBST.



CCDC120 Antibody (N-term) (Cat. #AP13363a) western blot analysis in uterus tumor cell line lysates (35ug/lane). This demonstrates the CCDC120 antibody detected the CCDC120 protein (arrow).