

DHFRL1 Antibody (Center)

Affinity Purified Rabbit Polyclonal Antibody (Pab)

Catalog # AP13364c

Product Information

Application	WB, IHC-P, E
Primary Accession	Q86XF0
Other Accession	NP_789785.1
Reactivity	Human
Host	Rabbit
Clonality	Polyclonal
Isotype	Rabbit IgG
Clone Names	RB33570
Calculated MW	21620
Antigen Region	45-74

Additional Information

Gene ID	200895
Other Names	Dihydrofolate reductase, mitochondrial, Dihydrofolate reductase-like protein 1, DHFRL1, DHFRP4
Target/Specificity	This DHFRL1 antibody is generated from rabbits immunized with a KLH conjugated synthetic peptide between 45-74 amino acids from the Central region of human DHFRL1.
Dilution	WB~~1:1000 IHC-P~~1:100~500 E~~Use at an assay dependent concentration.
Format	Purified polyclonal antibody supplied in PBS with 0.09% (W/V) sodium azide. This antibody is purified through a protein A column, followed by peptide affinity purification.
Storage	Maintain refrigerated at 2-8°C for up to 2 weeks. For long term storage store at -20°C in small aliquots to prevent freeze-thaw cycles.
Precautions	DHFRL1 Antibody (Center) is for research use only and not for use in diagnostic or therapeutic procedures.

Protein Information

Name	DHFR2 (HGNC:27309)
Synonyms	DHFRL1, DHFRP4
Function	Key enzyme in folate metabolism. Contributes to the de novo mitochondrial

thymidylate biosynthesis pathway. Required to prevent uracil accumulation in mtDNA. Binds its own mRNA and that of DHFR.

Cellular Location	Mitochondrion. Mitochondrion matrix. Mitochondrion inner membrane
Tissue Location	Expressed in numerous cell lines.

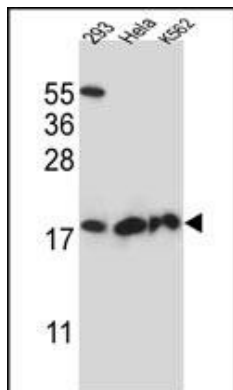
Background

DHFRL1 may play a role in folate metabolism (Potential).

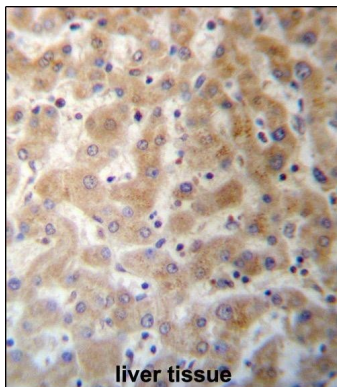
References

Semmler, A., et al. J. Neurosurg. 108(5):999-1004(2008)
Lamesch, P., et al. Genomics 89(3):307-315(2007)

Images



DHFRL1 Antibody (Center) (Cat. #AP13364c) western blot analysis in 293, HeLa, K562 cell line lysates (35ug/lane). This demonstrates the DHFRL1 antibody detected the DHFRL1 protein (arrow).



DHFRL1 Antibody (Center) (Cat. #AP13364c) immunohistochemistry analysis in formalin fixed and paraffin embedded human liver tissue followed by peroxidase conjugation of the secondary antibody and DAB staining. This data demonstrates the use of DHFRL1 Antibody (Center) for immunohistochemistry. Clinical relevance has not been evaluated.

Please note: All products are 'FOR RESEARCH USE ONLY. NOT FOR USE IN DIAGNOSTIC OR THERAPEUTIC PROCEDURES'.