

SLIT1 Antibody (N-term)

Affinity Purified Rabbit Polyclonal Antibody (Pab)

Catalog # AP13374a

Product Information

Application	WB, IHC-P, E
Primary Accession	O75093
Other Accession	O88279 , Q80TR4 , NP_003052.2
Reactivity	Mouse
Predicted	Rat
Host	Rabbit
Clonality	Polyclonal
Isotype	Rabbit IgG
Clone Names	RB32325
Calculated MW	167926
Antigen Region	84-113

Additional Information

Gene ID	6585
Other Names	Slit homolog 1 protein, Slit-1, Multiple epidermal growth factor-like domains protein 4, Multiple EGF-like domains protein 4, SLIT1, KIAA0813, MEGF4, SLIL1
Target/Specificity	This SLIT1 antibody is generated from rabbits immunized with a KLH conjugated synthetic peptide between 84-113 amino acids from the N-terminal region of human SLIT1.
Dilution	WB~~1:1000 IHC-P~~1:100~500 E~~Use at an assay dependent concentration.
Format	Purified polyclonal antibody supplied in PBS with 0.09% (W/V) sodium azide. This antibody is purified through a protein A column, followed by peptide affinity purification.
Storage	Maintain refrigerated at 2-8°C for up to 2 weeks. For long term storage store at -20°C in small aliquots to prevent freeze-thaw cycles.
Precautions	SLIT1 Antibody (N-term) is for research use only and not for use in diagnostic or therapeutic procedures.

Protein Information

Name	SLIT1
Synonyms	KIAA0813, MEGF4, SLIL1

Function	Thought to act as molecular guidance cue in cellular migration, and function appears to be mediated by interaction with roundabout homolog receptors. During neural development involved in axonal navigation at the ventral midline of the neural tube and projection of axons to different regions (By similarity). SLIT1 and SLIT2 together seem to be essential for midline guidance in the forebrain by acting as repulsive signal preventing inappropriate midline crossing by axons projecting from the olfactory bulb.
Cellular Location	Secreted.
Tissue Location	Predominantly expressed in adult forebrain. Expressed in fetal brain, lung and kidney

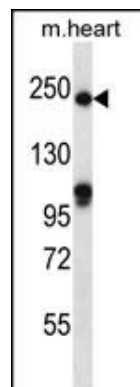
Background

Thought to act as molecular guidance cue in cellular migration, and function appears to be mediated by interaction with roundabout homolog receptors. During neural development involved in axonal navigation at the ventral midline of the neural tube and projection of axons to different regions (By similarity). SLIT1 and SLIT2 together seem to be essential for midline guidance in the forebrain by acting as repulsive signal preventing inappropriate midline crossing by axons projecting from the olfactory bulb.

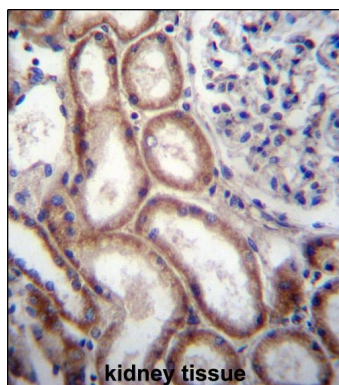
References

Marlow, R., et al. Cancer Res. 68(19):7819-7827(2008)
Hussain, S.A., et al. J. Biol. Chem. 281(51):39693-39698(2006)
Lin, L., et al. Stem Cells 24(11):2504-2513(2006)
Lim, J., et al. Cell 125(4):801-814(2006)
Grupe, A., et al. Am. J. Hum. Genet. 78(1):78-88(2006)

Images



SLIT1 Antibody (N-term) (Cat. #AP13374a) western blot analysis in mouse heart tissue lysates (35ug/lane). This demonstrates the SLIT1 antibody detected the SLIT1 protein (arrow).



SLIT1 Antibody (N-term) (Cat. #AP13374a) immunohistochemistry analysis in formalin fixed and paraffin embedded human kidney tissue followed by peroxidase conjugation of the secondary antibody and DAB staining. This data demonstrates the use of SLIT1 Antibody (N-term) for immunohistochemistry. Clinical relevance has not been evaluated.

Please note: All products are 'FOR RESEARCH USE ONLY. NOT FOR USE IN DIAGNOSTIC OR THERAPEUTIC PROCEDURES'.