

BEAN Antibody (N-term)

Affinity Purified Rabbit Polyclonal Antibody (Pab)

Catalog # AP13386a

Product Information

Application	WB, IHC-P, E
Primary Accession	Q3B7T3
Other Accession	NP_001129578.1 , NP_001171491.1
Reactivity	Human
Host	Rabbit
Clonality	Polyclonal
Isotype	Rabbit IgG
Clone Names	RB32748
Calculated MW	28626
Antigen Region	45-73

Additional Information

Gene ID	146227
Other Names	Protein BEAN1, Brain-expressed protein associating with Nedd4 homolog, BEAN, BEAN1
Target/Specificity	This BEAN antibody is generated from rabbits immunized with a KLH conjugated synthetic peptide between 45-73 amino acids from the N-terminal region of human BEAN.
Dilution	WB~~1:1000 IHC-P~~1:100~500 E~~Use at an assay dependent concentration.
Format	Purified polyclonal antibody supplied in PBS with 0.09% (W/V) sodium azide. This antibody is purified through a protein A column, followed by peptide affinity purification.
Storage	Maintain refrigerated at 2-8°C for up to 2 weeks. For long term storage store at -20°C in small aliquots to prevent freeze-thaw cycles.
Precautions	BEAN Antibody (N-term) is for research use only and not for use in diagnostic or therapeutic procedures.

Protein Information

Name	BEAN1
Cellular Location	Membrane; Single-pass membrane protein

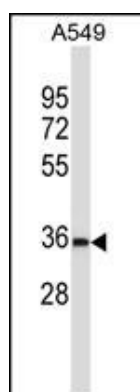
Background

The protein encoded by this gene is one of several proteins that interact with NEDD4, a member of a family of ubiquitin-protein ligases. These proteins have PY motifs in common that bind to the WW domains of NEDD4. NEDD4 is developmentally regulated, and is highly expressed in embryonic tissues. Mutations in this gene (i.e., intronic insertions of >100 copies of pentanucleotide repeats including a (TGGA)n sequence) are associated with spinocerebellar ataxia type 31. Alternatively spliced transcript variants encoding different isoforms have been found for this gene.

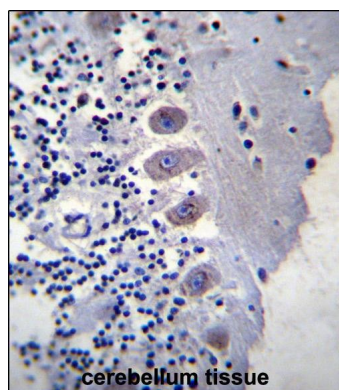
References

Sato, N., et al. Am. J. Hum. Genet. 85(5):544-557(2009)
Jolliffe, C.N., et al. Biochem. J. 351 PT 3, 557-565 (2000) :

Images



BEAN Antibody (N-term) (Cat. #AP13386a) western blot analysis in A549 cell line lysates (35ug/lane). This demonstrates the BEAN antibody detected the BEAN protein (arrow).



BEAN Antibody (N-term) (Cat. #AP13386a) immunohistochemistry analysis in formalin fixed and paraffin embedded human cerebellum tissue followed by peroxidase conjugation of the secondary antibody and DAB staining. This data demonstrates the use of BEAN Antibody (N-term) for immunohistochemistry. Clinical relevance has not been evaluated.

Please note: All products are 'FOR RESEARCH USE ONLY. NOT FOR USE IN DIAGNOSTIC OR THERAPEUTIC PROCEDURES'.