

TGFBRAP1 Antibody (C-term)

Affinity Purified Rabbit Polyclonal Antibody (Pab)

Catalog # AP13395b

Product Information

Application	WB, IHC-P, E
Primary Accession	Q8WUH2
Other Accession	NP_004248.2 , NP_001136093.1
Reactivity	Human
Host	Rabbit
Clonality	Polyclonal
Isotype	Rabbit IgG
Clone Names	RB32951
Calculated MW	97158
Antigen Region	499-528

Additional Information

Gene ID	9392
Other Names	Transforming growth factor-beta receptor-associated protein 1, TGF-beta receptor-associated protein 1, TRAP-1, TRAP1, TGFBRAP1
Target/Specificity	This TGFBRAP1 antibody is generated from rabbits immunized with a KLH conjugated synthetic peptide between 499-528 amino acids from the C-terminal region of human TGFBRAP1.
Dilution	WB~~1:1000 IHC-P~~1:100~500 E~~Use at an assay dependent concentration.
Format	Purified polyclonal antibody supplied in PBS with 0.09% (W/V) sodium azide. This antibody is purified through a protein A column, followed by peptide affinity purification.
Storage	Maintain refrigerated at 2-8°C for up to 2 weeks. For long term storage store at -20°C in small aliquots to prevent freeze-thaw cycles.
Precautions	TGFBRAP1 Antibody (C-term) is for research use only and not for use in diagnostic or therapeutic procedures.

Protein Information

Name	TGFBRAP1
Function	Plays a role in the TGF-beta/activin signaling pathway. It associates with inactive heteromeric TGF-beta and activin receptor complexes, mainly through the type II receptor, and is released upon activation of signaling. May

recruit SMAD4 to the vicinity of the receptor complex and facilitate its interaction with receptor-regulated Smads, such as SMAD2.

Cellular Location

Cytoplasm. Early endosome. Note=Colocalizes with TGF-beta receptors in the absence of signaling

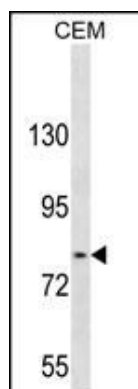
Background

TGFBRAP1 plays a role in the TGF-beta/activin signaling pathway. It associates with inactive heteromeric TGF-beta and activin receptor complexes, mainly through the type II receptor, and is released upon activation of signaling. May recruit SMAD4 to the vicinity of the receptor complex and facilitate its interaction with receptor-regulated Smads, such as SMAD2.

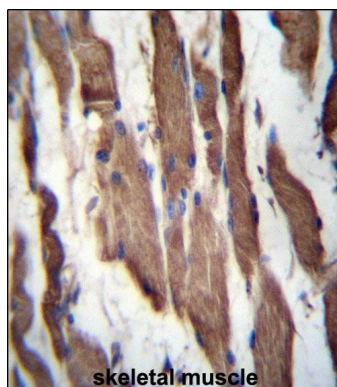
References

Rose, J. Phd, et al. Mol. Med. (2010) In press :
Le Clerc, S., et al. J. Infect. Dis. 200(8):1194-1201(2009)
Hwang, Y., et al. Pharmacogenomics 7(5):697-709(2006)
Wurthner, J.U., et al. J. Biol. Chem. 276(22):19495-19502(2001)
Provost, P., et al. Proc. Natl. Acad. Sci. U.S.A. 96(5):1881-1885(1999)

Images



TGFBRAP1 Antibody (C-term) (Cat. #AP13395b) western blot analysis in CEM cell line lysates (35ug/lane). This demonstrates the TGFBRAP1 antibody detected the TGFBRAP1 protein (arrow).



TGFBRAP1 Antibody (C-term) (Cat. #AP13395b) immunohistochemistry analysis in formalin fixed and paraffin embedded human skeletal muscle followed by peroxidase conjugation of the secondary antibody and DAB staining. This data demonstrates the use of TGFBRAP1 Antibody (C-term) for immunohistochemistry. Clinical relevance has not been evaluated.

Please note: All products are 'FOR RESEARCH USE ONLY. NOT FOR USE IN DIAGNOSTIC OR THERAPEUTIC PROCEDURES'.