

# TAF8 Antibody (Center)

Affinity Purified Rabbit Polyclonal Antibody (Pab)

Catalog # AP13397c

## Product Information

---

<b>Application</b>	IHC-P, WB, E
<b>Primary Accession</b>	<a href="#">Q7Z7C8</a>
<b>Other Accession</b>	<a href="#">Q5ZMS1</a> , <a href="#">A7MAZ4</a> , <a href="#">NP_612639.2</a>
<b>Reactivity</b>	Human, Mouse
<b>Predicted</b>	Bovine, Chicken
<b>Host</b>	Rabbit
<b>Clonality</b>	Polyclonal
<b>Isotype</b>	Rabbit IgG
<b>Clone Names</b>	RB33000
<b>Calculated MW</b>	34262
<b>Antigen Region</b>	151-178

## Additional Information

---

<b>Gene ID</b>	129685
<b>Other Names</b>	Transcription initiation factor TFIID subunit 8, Protein taube nuss, TBP-associated factor 43 kDa, TBP-associated factor 8, Transcription initiation factor TFIID 43 kDa subunit, TAFII-43, TAFII43, hTAFII43, TAF8, TAFII43, TBN
<b>Target/Specificity</b>	This TAF8 antibody is generated from rabbits immunized with a KLH conjugated synthetic peptide between 151-178 amino acids from the Central region of human TAF8.
<b>Dilution</b>	IHC-P~~1:100~500 WB~~1:1000 E~~Use at an assay dependent concentration.
<b>Format</b>	Purified polyclonal antibody supplied in PBS with 0.09% (W/V) sodium azide. This antibody is purified through a protein A column, followed by peptide affinity purification.
<b>Storage</b>	Maintain refrigerated at 2-8°C for up to 2 weeks. For long term storage store at -20°C in small aliquots to prevent freeze-thaw cycles.
<b>Precautions</b>	TAF8 Antibody (Center) is for research use only and not for use in diagnostic or therapeutic procedures.

## Protein Information

---

<b>Name</b>	TAF8
<b>Synonyms</b>	TAFII43, TBN

## Function

The TFIID basal transcription factor complex plays a major role in the initiation of RNA polymerase II (Pol II)-dependent transcription (PubMed:[33795473](#)). TFIID recognizes and binds promoters with or without a TATA box via its subunit TBP, a TATA-box-binding protein, and promotes assembly of the pre-initiation complex (PIC) (PubMed:[33795473](#)). The TFIID complex consists of TBP and TBP-associated factors (TAFs), including TAF1, TAF2, TAF3, TAF4, TAF5, TAF6, TAF7, TAF8, TAF9, TAF10, TAF11, TAF12 and TAF13 (PubMed:[33795473](#)). The TFIID complex structure can be divided into 3 modules TFIID-A, TFIID-B, and TFIID-C (PubMed:[33795473](#)). TAF8 is involved in forming the TFIID-B module, together with TAF5 (PubMed:[33795473](#)). Mediates both basal and activator-dependent transcription (PubMed:[14580349](#)). Plays a role in the differentiation of preadipocyte fibroblasts to adipocytes, however, does not seem to play a role in differentiation of myoblasts (PubMed:[14580349](#)). Required for the integration of TAF10 in the TAF complex (PubMed:[14580349](#)). May be important for survival of cells of the inner cell mass which constitute the pluripotent cell population of the early embryo (By similarity).

## Cellular Location

Nucleus. Cytoplasm Note=Predominantly nuclear.

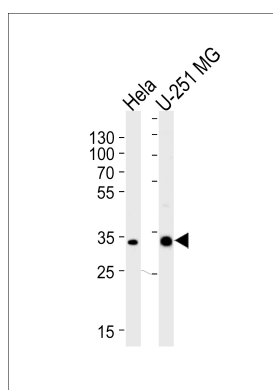
## Background

This gene encodes one of several TATA-binding protein (TBP)-associated factors (TAFs), which are integral subunits of the general transcription factor complex TFIID. TFIID recognizes the core promoter of many genes and nucleates the assembly of a transcription preinitiation complex containing RNA polymerase II and other initiation factors. The protein encoded by this gene contains an H4-like histone fold domain, and interacts with several subunits of TFIID including TBP and the histone-fold protein TAF10. Alternatively spliced transcript variants have been described, but their biological validity has not been determined. [provided by RefSeq].

## References

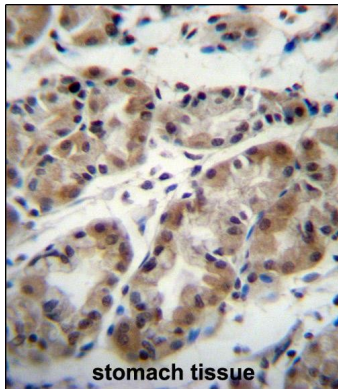
Ganesh, S.K., et al. Nat. Genet. 41(11):1191-1198(2009)  
Soranzo, N., et al. Nat. Genet. 41(11):1182-1190(2009)  
Chapuis, J., et al. Mol. Psychiatry 14(11):1004-1016(2009)  
Soutoglou, E., et al. Mol. Cell. Biol. 25(10):4092-4104(2005)  
Guermah, M., et al. Mol. Cell 12(4):991-1001(2003)

## Images



Western blot analysis of lysates from HeLa, U-251 MG cell line (from left to right), using TAF8 Antibody (Center) (Cat. #AP13397c). AP13397c was diluted at 1:1000 at each lane. A goat anti-rabbit IgG H&L(HRP) at 1:5000 dilution was used as the secondary antibody. Lysates at 35ug per lane.

TAF8 Antibody (Center) (Cat. #AP13397c) immunohistochemistry analysis in formalin fixed and paraffin embedded human stomach tissue



followed by peroxidase conjugation of the secondary antibody and DAB staining. This data demonstrates the use of TAF8 Antibody (Center) for immunohistochemistry. Clinical relevance has not been evaluated.

Please note: All products are 'FOR RESEARCH USE ONLY. NOT FOR USE IN DIAGNOSTIC OR THERAPEUTIC PROCEDURES'.