

P11 Antibody (N-term)

Affinity Purified Rabbit Polyclonal Antibody (Pab)

Catalog # AP13398a

Product Information

Application	WB, E
Primary Accession	P21128
Other Accession	NP_001165910.1 , NP_001165911.1 , NP_006016.1
Reactivity	Human
Host	Rabbit
Clonality	Polyclonal
Isotype	Rabbit IgG
Clone Names	RB33081
Calculated MW	46872
Antigen Region	2-32

Additional Information

Gene ID	8909
Other Names	Poly(U)-specific endoribonuclease, 31--, Placental protein 11, PP11, Protein endoU, Uridylate-specific endoribonuclease, ENDOU
Target/Specificity	This P11 antibody is generated from rabbits immunized with a KLH conjugated synthetic peptide between 2-32 amino acids from the N-terminal region of human P11.
Dilution	WB~~1:1000 E~~Use at an assay dependent concentration.
Format	Purified polyclonal antibody supplied in PBS with 0.05% (V/V) Proclin 300. This antibody is prepared by Saturated Ammonium Sulfate (SAS) precipitation followed by dialysis against PBS.
Storage	Maintain refrigerated at 2-8°C for up to 2 weeks. For long term storage store at -20°C in small aliquots to prevent freeze-thaw cycles.
Precautions	P11 Antibody (N-term) is for research use only and not for use in diagnostic or therapeutic procedures.

Protein Information

Name	ENDOU
Function	Endoribonuclease that cleaves single-stranded RNAs at 5' of uridylates and releases a product with a 2',3'-cyclic phosphate at the 3'-end. The UU and GU sites are more efficiently cleaved than CU and AU sites (PubMed: 18936097).

Targets mRNAs to regulate their expression (PubMed:[37803019](#)).

Cellular Location

Secreted.

Tissue Location

Placental-specific, but also associated with various malignant neoplasms

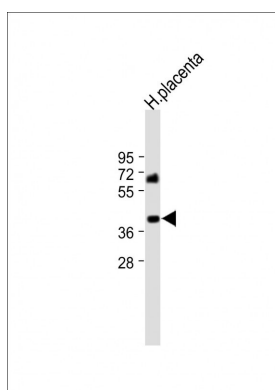
Background

This gene encodes a protein with protease activity and is expressed in the placenta. The protein may be useful as a tumor marker. Multiple alternatively spliced transcript variants have been found for this protein.

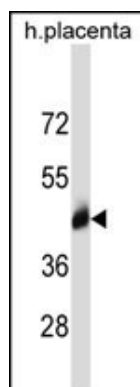
References

Rose, J. Phd, et al. Mol. Med. (2010) In press :
Laneve, P., et al. J. Biol. Chem. 283(50):34712-34719(2008)
Gioia, U., et al. J. Biol. Chem. 280(19):18996-19002(2005)
Jenne, D. Biochem. Biophys. Res. Commun. 176(3):1000-1006(1991)
Grundmann, U., et al. DNA Cell Biol. 9(4):243-250(1990)

Images



All lanes : Anti-P11 Antibody (N-term) at 1:1000 dilution
Lane 1: human placenta tissue lysate Lysates/proteins at 20 µg per lane. Secondary Goat Anti-Rabbit IgG, (H+L), Peroxidase conjugated (ASP1615) at 1/15000 dilution. Observed band size : 42kDa Blocking/Dilution buffer: 5% NFDM/TBST.



P11 Antibody (N-term) (Cat. #AP13398a) western blot analysis in human placenta tissue lysates (35ug/lane). This demonstrates the P11 antibody detected the P11 protein (arrow).

Please note: All products are 'FOR RESEARCH USE ONLY. NOT FOR USE IN DIAGNOSTIC OR THERAPEUTIC PROCEDURES'.