

cathepsin Q Antibody

Affinity Purified Rabbit Polyclonal Antibody (Pab)

Catalog # AP13427a

Product Information

Application	WB, E
Primary Accession	Q91ZF4
Other Accession	NP_083912.2
Reactivity	Mouse
Host	Rabbit
Clonality	Polyclonal
Isotype	Rabbit IgG
Clone Names	RB33804
Calculated MW	38705
Antigen Region	192-221

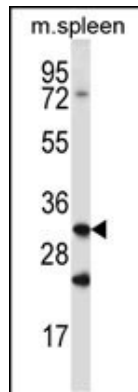
Additional Information

Gene ID	104002
Other Names	Cathepsin Q, isoform CRA_a;CtsQ
Target/Specificity	This cathepsin Q antibody is generated from rabbits immunized with a KLH conjugated synthetic peptide between 192-221 amino acids from human cathepsin Q.
Dilution	WB~~1:1000 E~~Use at an assay dependent concentration.
Format	Purified polyclonal antibody supplied in PBS with 0.09% (W/V) sodium azide. This antibody is purified through a protein A column, followed by peptide affinity purification.
Storage	Maintain refrigerated at 2-8°C for up to 2 weeks. For long term storage store at -20°C in small aliquots to prevent freeze-thaw cycles.
Precautions	cathepsin Q Antibody is for research use only and not for use in diagnostic or therapeutic procedures.

Protein Information

Name	Q91ZF4
Cellular Location	Lysosome {ECO:0000256 ARBA:ARBA00004371}.

Images



cathepsin Q Antibody (Cat. #AP13427a) western blot analysis in mouse spleen tissue lysates (35ug/lane). This demonstrates the cathepsin Q antibody detected the cathepsin Q protein (arrow).

Please note: All products are 'FOR RESEARCH USE ONLY. NOT FOR USE IN DIAGNOSTIC OR THERAPEUTIC PROCEDURES'.